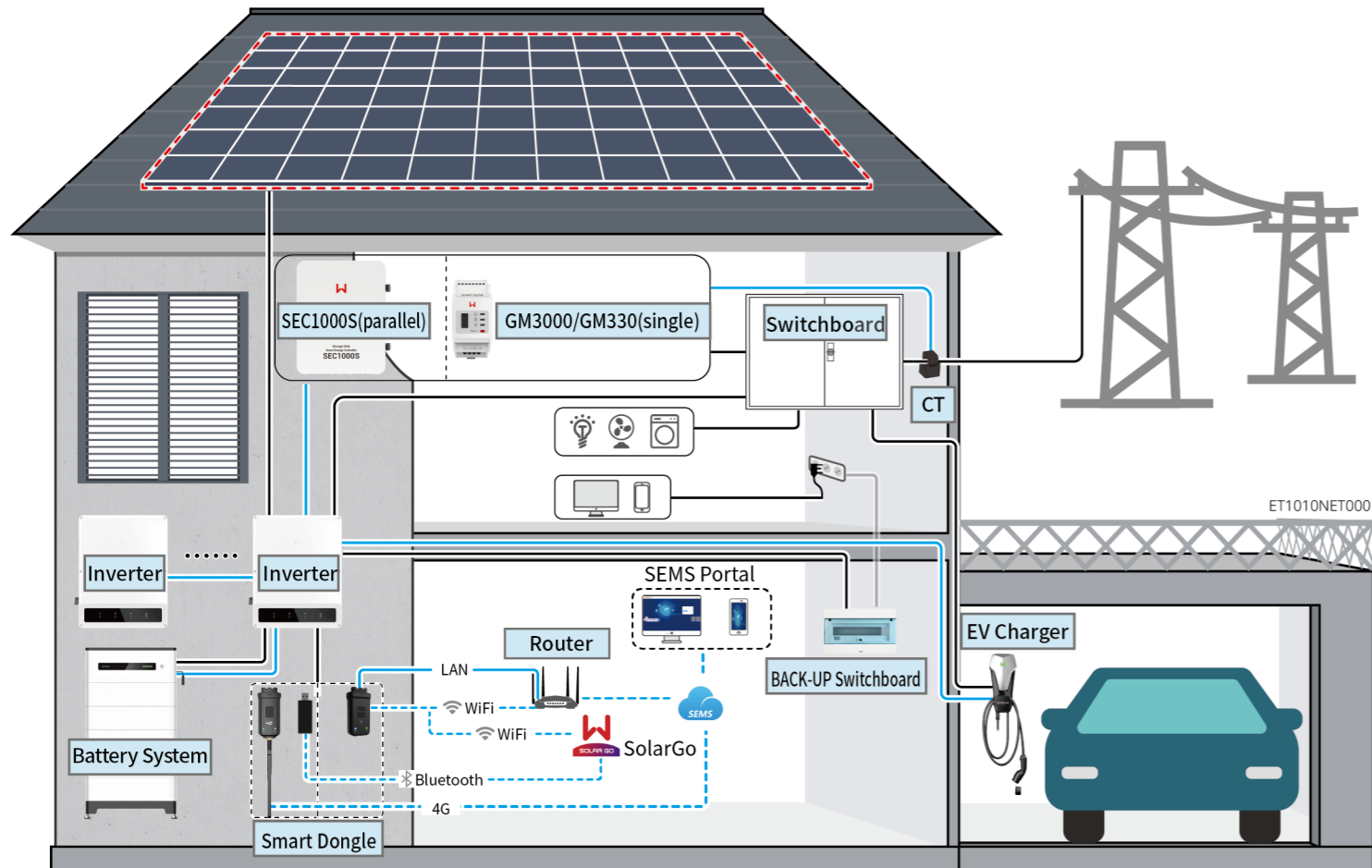


⚠ WARNING

The information in this quick guide is subject to change due to product updates or other reasons. This guide cannot replace the product labels or the safety precautions in the user manual unless otherwise specified. All descriptions in the manual are for guidance only.

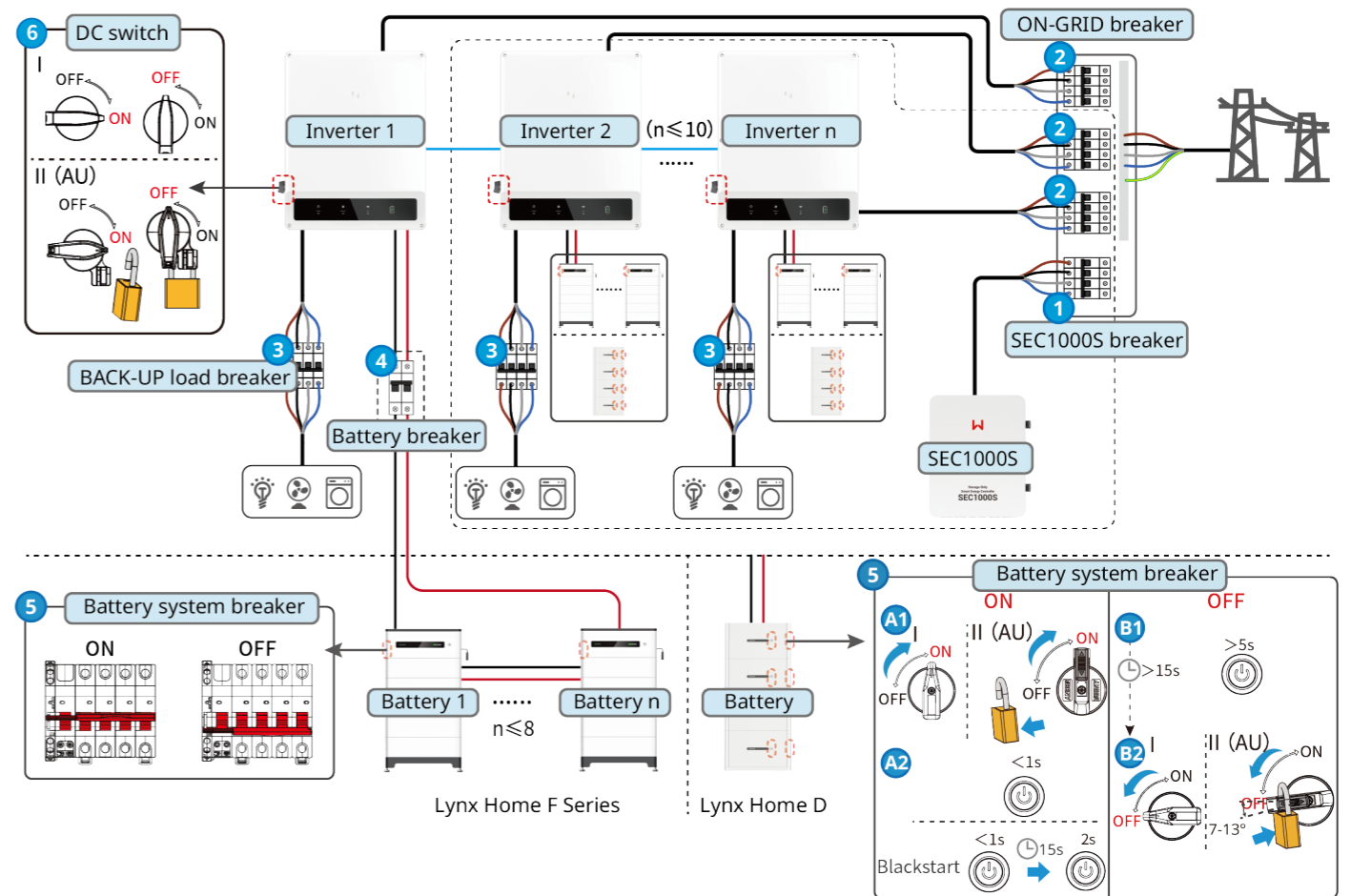
01 Networking



| Device | Model | Description | | | | | | | | | | | | | | | | | | | | | |
|------------------|--|------------------|-------------|-------------|--------------|---------|------------|---------------|-----------|--|---------------|-----------|--|---------------|------------|--|---------------|------------|--|---------------|--|--|---|
| Inverter | GW5KL-ET, GW6KL-ET, GW8KL-ET, GW10KL-ET, GW5KN-ET, GW6.5KN-ET, GW8KN-ET, GW10KN-ET, GW5K-ET, GW6.5K-ET, GW8K-ET, GW10K-ET | - | | | | | | | | | | | | | | | | | | | | | |
| Battery system | <table border="0"> <tr> <td>Lynx Home F (G2)</td> <td>Lynx Home F</td> <td>Lynx Home D</td> </tr> <tr> <td>LX F9.6-H-20</td> <td>,F Plus</td> <td>LX D5.0-10</td> </tr> <tr> <td>LX F12.8-H-20</td> <td>LX F6.6-H</td> <td></td> </tr> <tr> <td>LX F16.0-H-20</td> <td>LX F9.8-H</td> <td></td> </tr> <tr> <td>LX F19.2-H-20</td> <td>LX F13.1-H</td> <td></td> </tr> <tr> <td>LX F22.4-H-20</td> <td>LX F16.4-H</td> <td></td> </tr> <tr> <td>LX F25.6-H-20</td> <td></td> <td></td> </tr> </table> | Lynx Home F (G2) | Lynx Home F | Lynx Home D | LX F9.6-H-20 | ,F Plus | LX D5.0-10 | LX F12.8-H-20 | LX F6.6-H | | LX F16.0-H-20 | LX F9.8-H | | LX F19.2-H-20 | LX F13.1-H | | LX F22.4-H-20 | LX F16.4-H | | LX F25.6-H-20 | | | <ul style="list-style-type: none"> A maximum of 8 battery systems can be clustered in a system. Do not mix connect battery systems of different versions. |
| Lynx Home F (G2) | Lynx Home F | Lynx Home D | | | | | | | | | | | | | | | | | | | | | |
| LX F9.6-H-20 | ,F Plus | LX D5.0-10 | | | | | | | | | | | | | | | | | | | | | |
| LX F12.8-H-20 | LX F6.6-H | | | | | | | | | | | | | | | | | | | | | | |
| LX F16.0-H-20 | LX F9.8-H | | | | | | | | | | | | | | | | | | | | | | |
| LX F19.2-H-20 | LX F13.1-H | | | | | | | | | | | | | | | | | | | | | | |
| LX F22.4-H-20 | LX F16.4-H | | | | | | | | | | | | | | | | | | | | | | |
| LX F25.6-H-20 | | | | | | | | | | | | | | | | | | | | | | | |

| Device | Model | Description |
|-------------------------|--|--|
| Smart meter | GM3000 | <ul style="list-style-type: none"> Only for single inverter. GM3000: GM3000 and the CT, which cannot be replaced, are included in the inverter package. CT ratio: 120A/40mA. |
| Smart Dongle | <ul style="list-style-type: none"> Wi-Fi Kit WiFi/LAN Kit-20 | <ul style="list-style-type: none"> For single inverter or parallel connected inverters. A smart dongle is required for each inverter in the parallel system. |
| Smart Energy Controller | SEC1000S | <ul style="list-style-type: none"> Only for the parallel system. A maximum of 10 inverters can be parallel connected. GM3000 integrated. |

02 Power On/Off



Power on/off



④ : Install or not based on local laws and regulations.

03 Installations

| Steps | 1 Installation | 2 PE | 3 PV | 4 Battery | 5 AC | 6 COM | 7 Communication module | | |
|----------|---|--------------|--------------------------------|-----------|----------------------------|---------|------------------------|------------------|------------------------|
| Inverter | | | | | | | Wi-Fi Kit | Bluetooth Module | 4G Kit-EC 4G Kit-AU |
| Tools | 1 D: 80mm φ: 8mm 2 M5 1.2~2N·m | M5 1.5~2N·m | Recommend: PV-CZM-61100 | | 1 2 M5 1.5~2N·m | 1.5 N·m | | | |

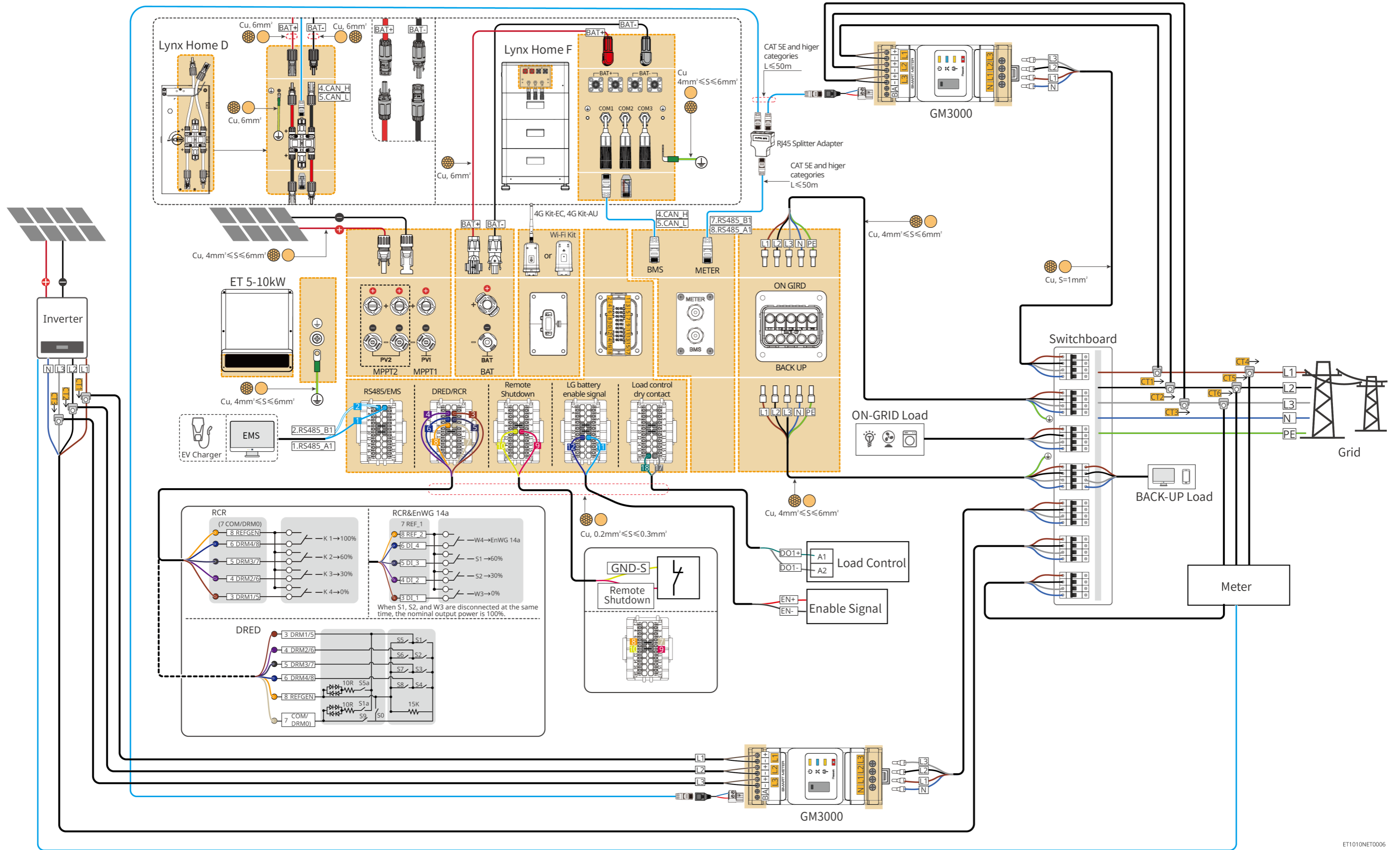
| Steps | 1 Installation | | | | 2 PE | 3 Battery | | | | | | | | 4 COM | |
|---------|---|-------------|-------------------|-------------|----------------------------------|-------------|--------------------------|--------------------------|--------------------------|-----------------------|-----------------------|-----------------------|-----------------------|-----------------------|--|
| Battery | Lynx Home F G2 | Lynx Home F | Lynx Home F Plus+ | Lynx Home D | Lynx Home F | Lynx Home D | Lynx Home F G2 | Lynx Home F | Lynx Home F Plus+ | Lynx Home D | Lynx Home F | Lynx Home D | Lynx Home F | Lynx Home D | |
| Tools | 1 Ground 2 Wall D: 80mm φ: 10mm 3 ST5.5 4N·m 4 M5 4N·m | | | | 1 M6 6-7N·m 2 M5 4N·m | M5 4N·m | Recommend: YQK-70 | Recommend: YQK-70 | Recommend: YQK-70 | Recommend: YQK-70 | Recommend: YQK-70 | Recommend: YQK-70 | Recommend: YQK-70 | Recommend: YQK-70 | |
| | A1 D: 60mm φ: 15mm A2 M12 45N·m B1 D: 60mm φ: 8mm B2 M6 5N·m B3 M5 4N·m B4 M5 4N·m | | | | | | | | | | | | | | |

| Steps | 1 Installation | | 2 Cable Connections | | 3 Power | 4 Commissioning | |
|-------------|----------------|-------|---------------------|-------|------------|---------------------|--|
| Smart meter | GM3000 | GM330 | GM3000 | GM330 | AC breaker | SolarGo APP | SEMS Portal APP or SEMS Portal WEB |
| | | | | | | | |

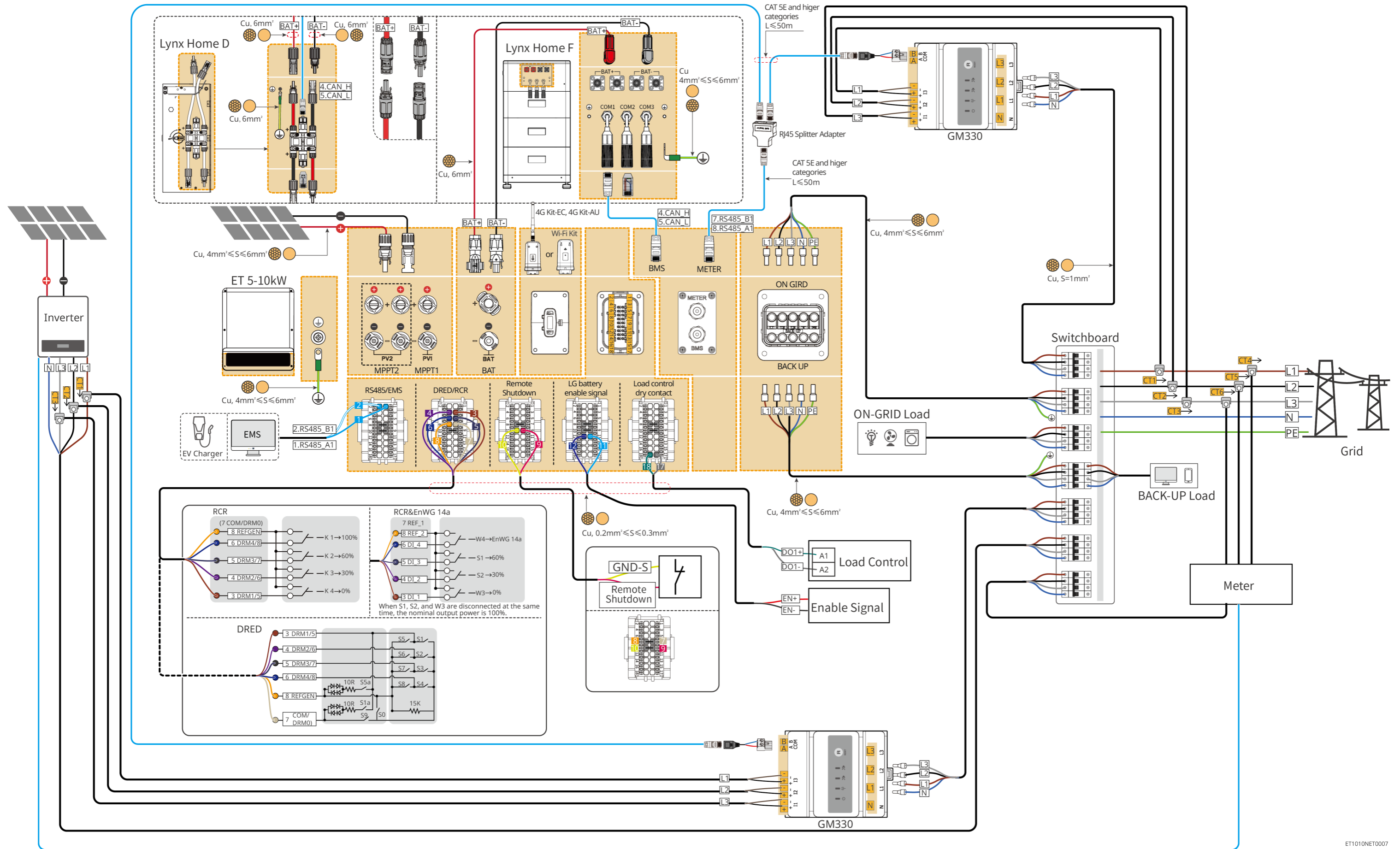
| Steps | 1 Installation | 2 PE | 3 AC | 4 CT | 5 NET | 6 DI | 7 RS485 |
|----------|--|---------------|--|---------------|-------|-----------------------|--------------------|
| Inverter | | | | | | | |
| Tools | <p>1 D: 45mm φ: 8mm</p> <p>2 ST6.3 6N·m</p> | M5 1.2N·m | <p>2 M7 3.5N·m</p> <p>3 M5 1.2N·m</p> | M3 0.6N·m | | <p>M2 0.2-0.3 N·m</p> | M2 0.2-0.3 N·m |

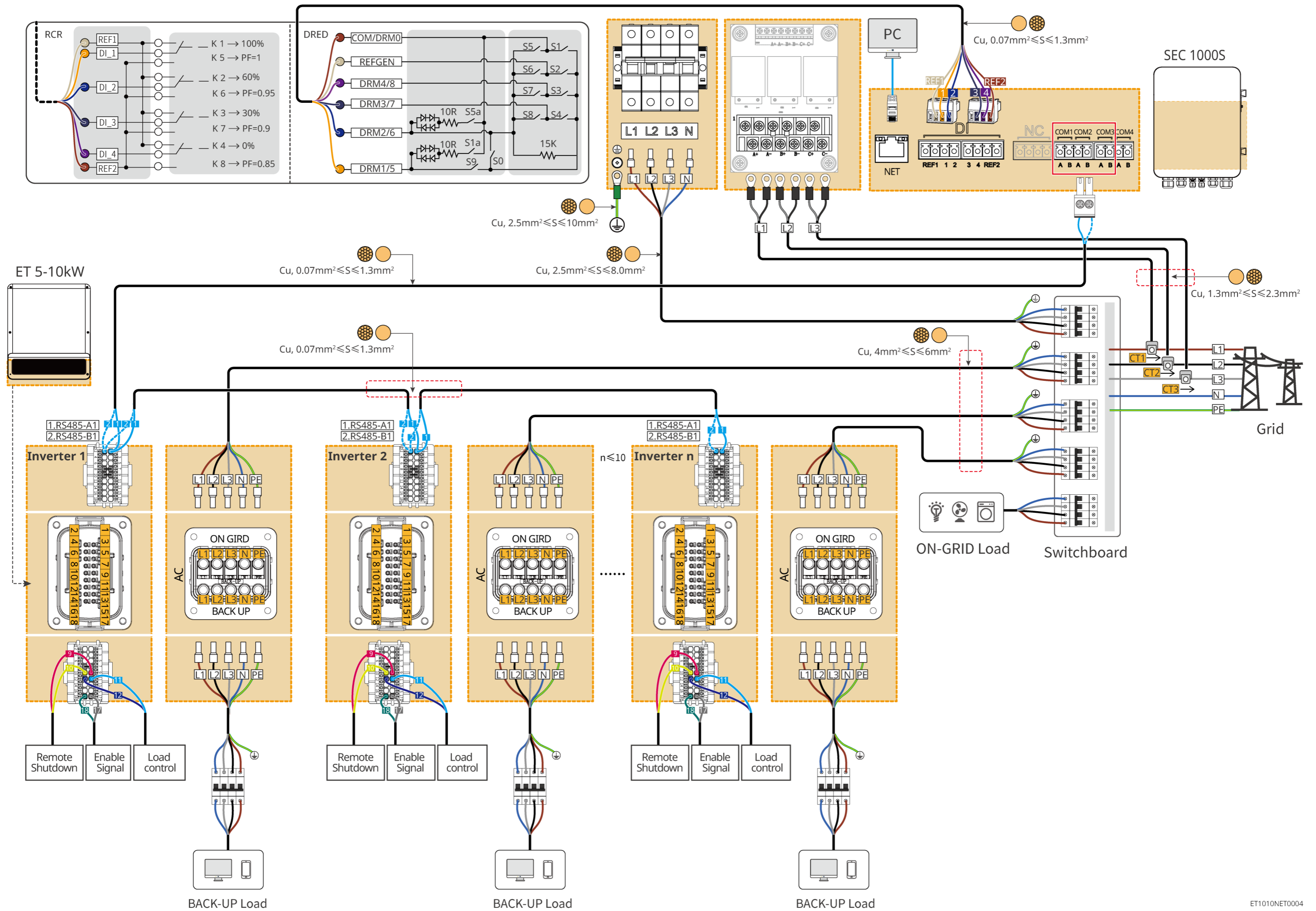
04 Wiring Diagram

ET 5-10kW (single) + Lynx Home F or Lynx Home D+ GM3000 + WiFi/4G



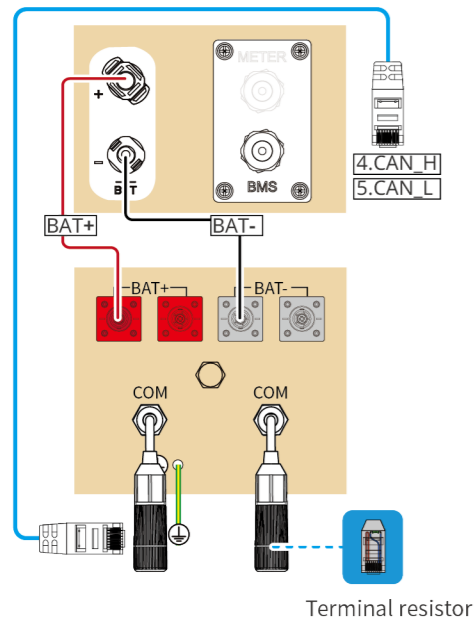
ET1010NET0006



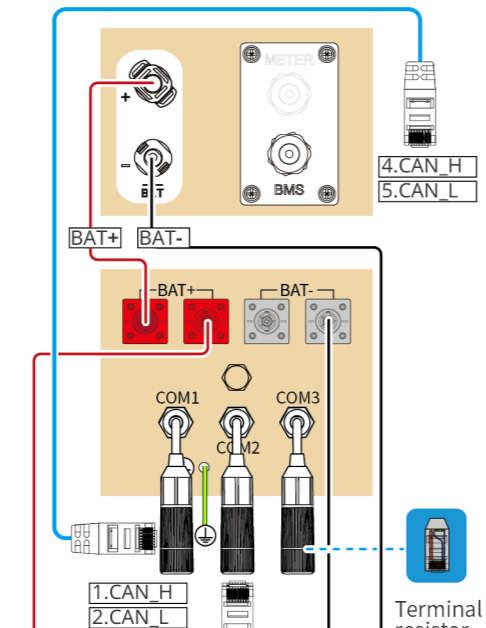


Battery System Wiring Diagram

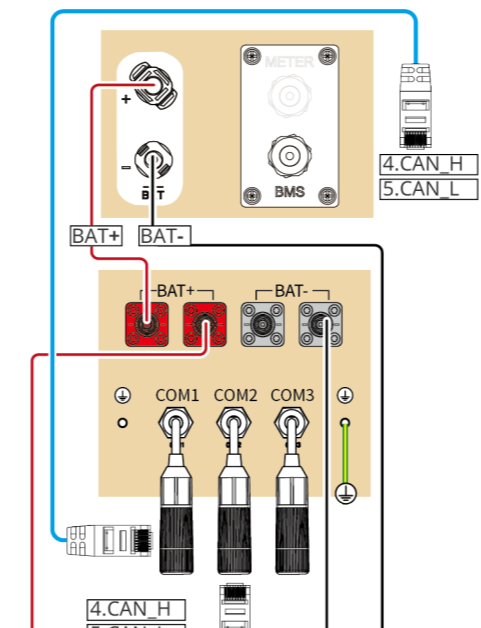
Lynx Home F (G1)



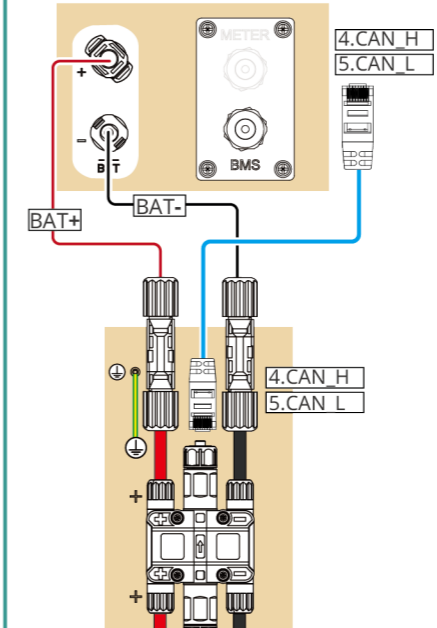
Lynx Home F (Plus+)



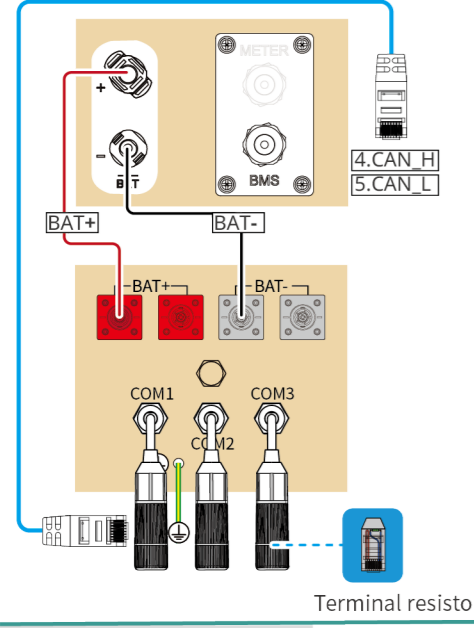
Lynx Home F (G2)



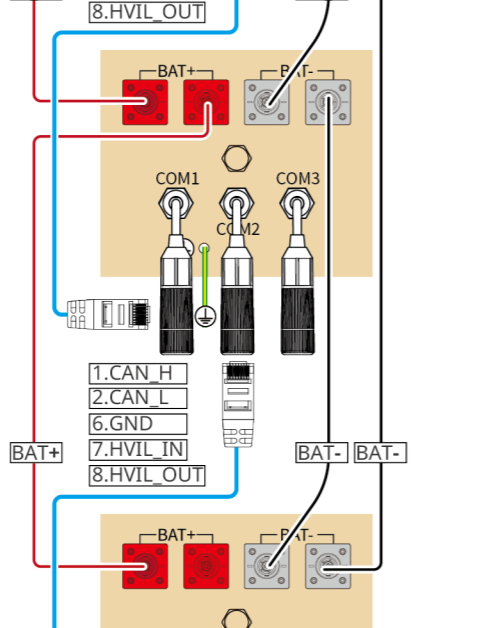
Lynx Home D



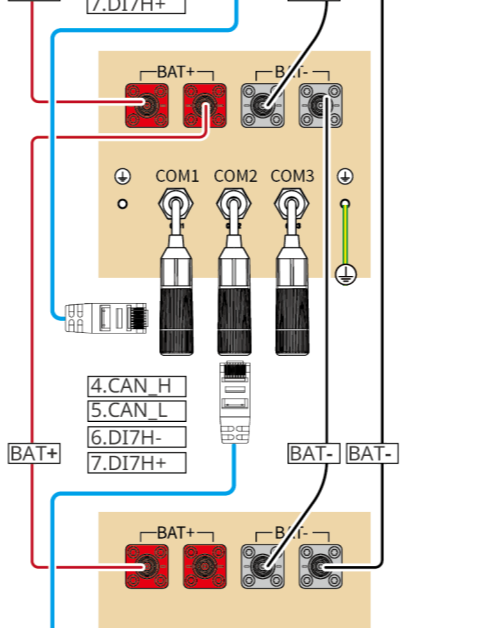
Lynx Home F (Plus+)



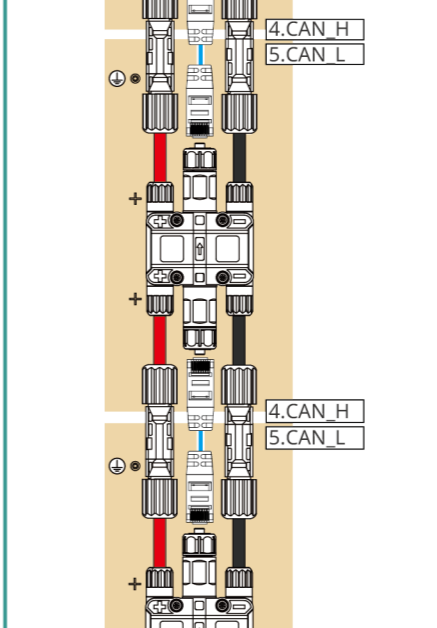
Lynx Home F (Plus+)



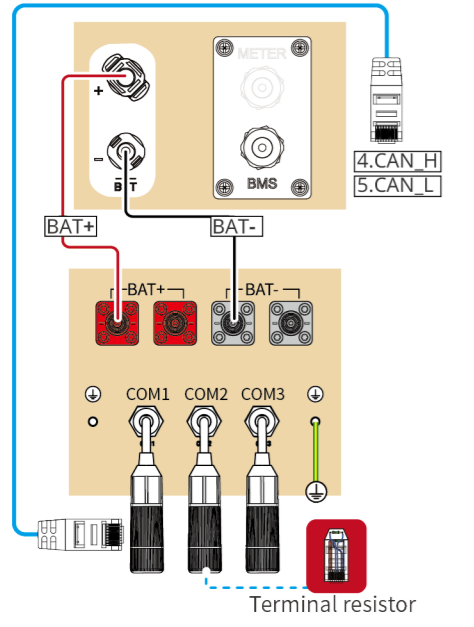
Lynx Home F (G2)



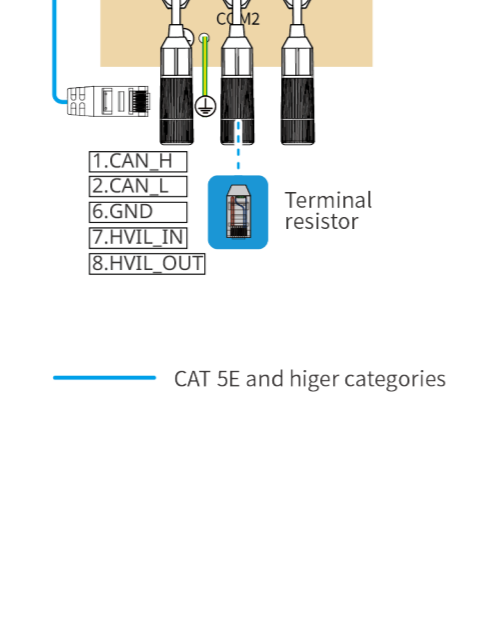
Lynx Home D



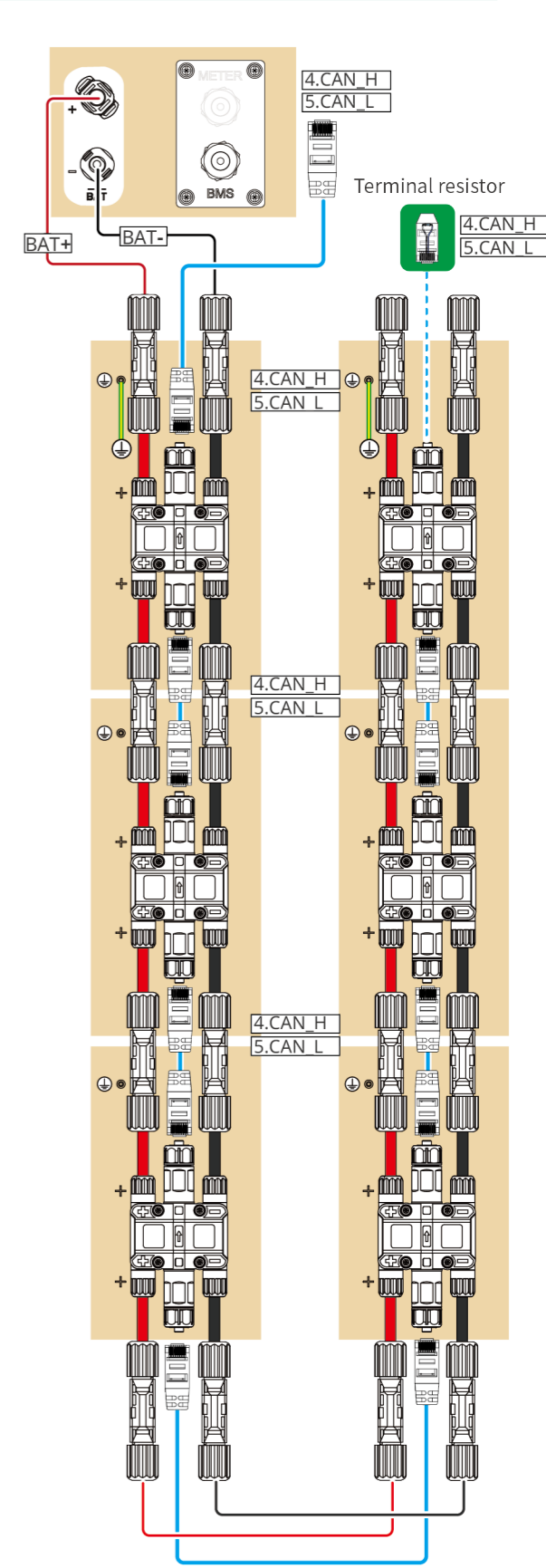
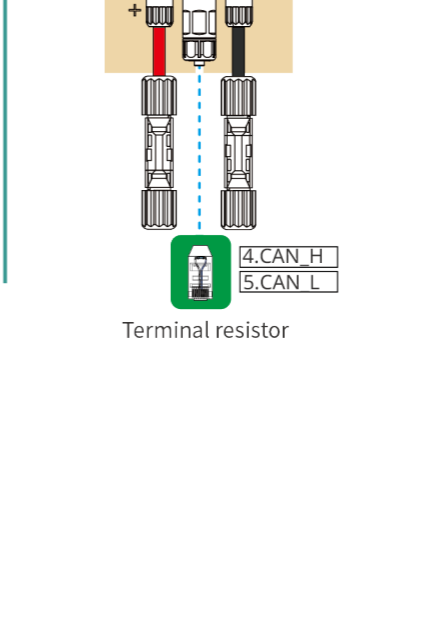
Lynx Home F (G2)



Lynx Home F (G2)



Lynx Home D



— CAT 5E and higher categories

05 Equipment Commissioning



SolarGo APP



ProMate (for PC)



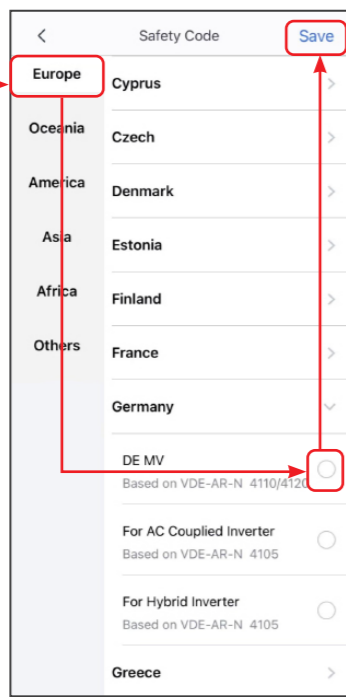
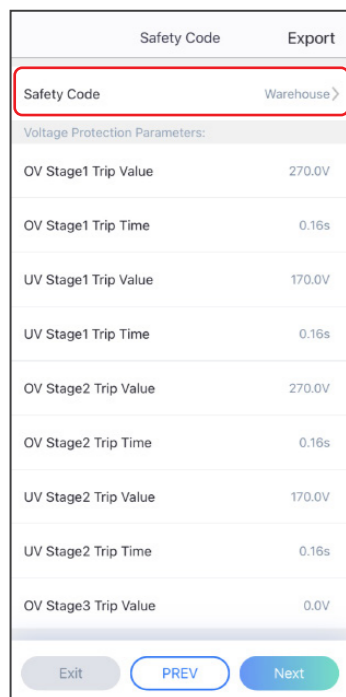
SEMS Portal APP

Download and open the APP, follow the prompts to connect the device.

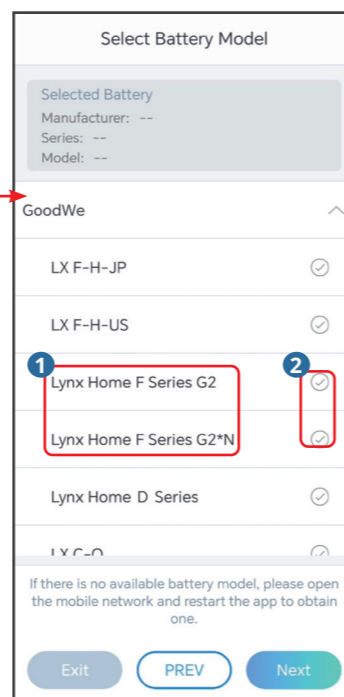
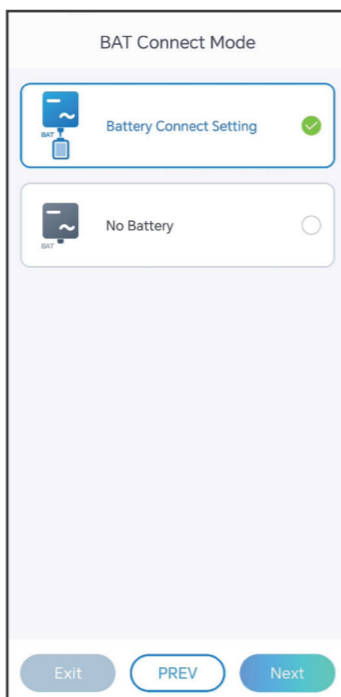
Quick Settings

Click SolarGo APP **Home>Settings>Quick Settings** to complete quick settings step by step.
Installer password: goodwe2010

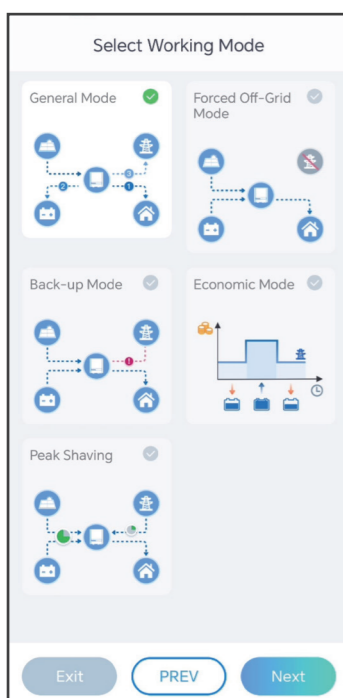
Setting the Safety Code



Setting the BAT Connect Mode

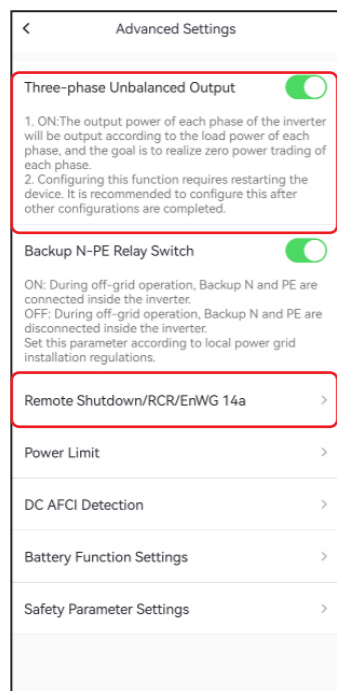


Setting the Working Mode



Setting the Advanced Parameters (single inverter only)

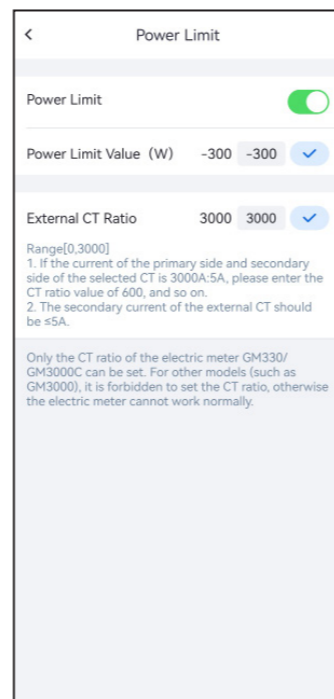
Tap **Home > Settings > Advanced Settings** to set the following functions.



Enable **Three-phase Unbalanced Output** when the utility grid company adopts phase separate billing.

The function is disabled by default, if you need **DRED/Remote Shutdown/RCR/EnWG 14a** function, enable it. To use the EnWG 14a, please ensure that the ARM software version is 31.297 or above, and the SolarGo version is 6.0.0 or above.

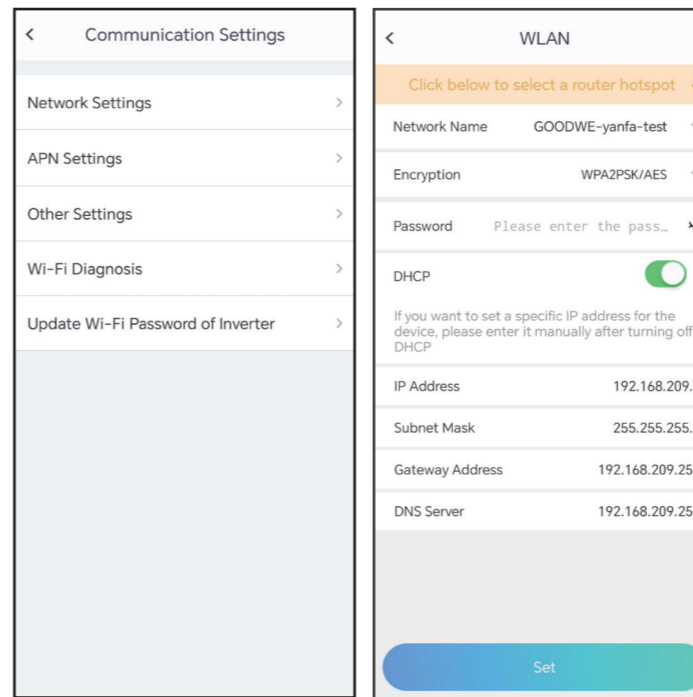
Setting the Power Limit Function



Configuring the Network

Tap **Home > Settings > Communication Setting > Network Settings** to set network parameters.

WiFi Kit



Configuring the SEC1000S (parallel system only)

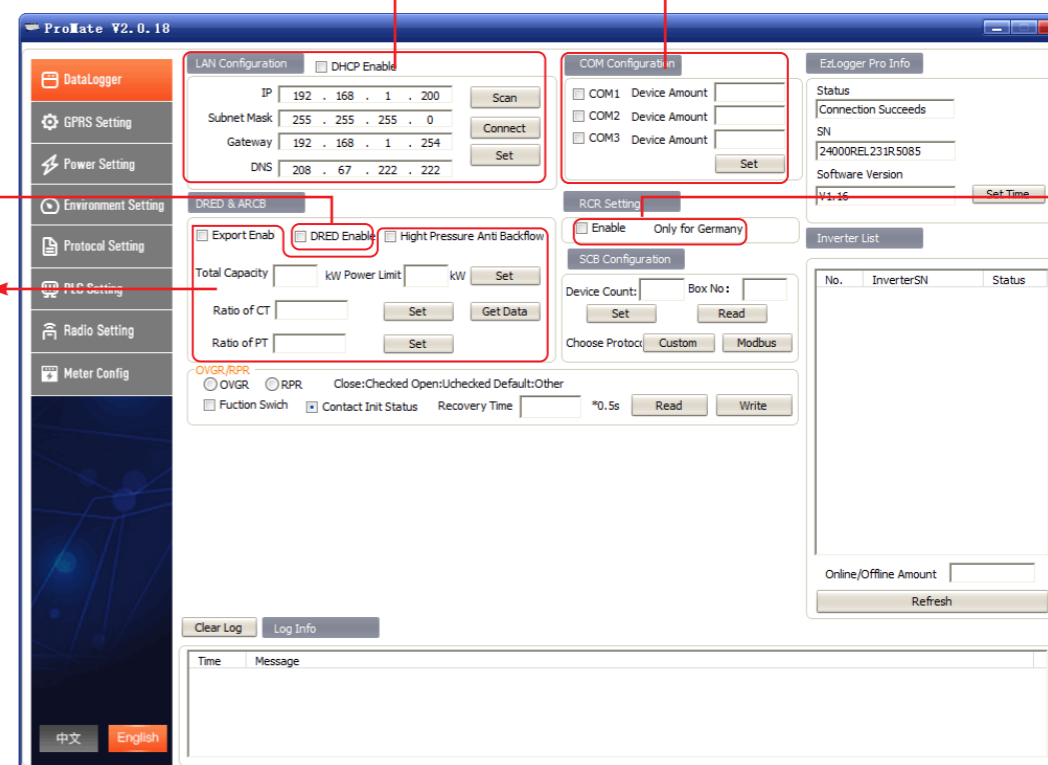
Connect the SEC1000S and PC using a network cable, and configure the two on the same network segment. Default IP of the SEC1000S: 192.168.1.200.
Start ProMate and click **DataLogger > LAN Configuration** to fill in the IP information. Click **Connect** to connect the ProMate and the SEC1000S.

Setting the network of the data logger

Setting number of the inverter connected to the COM port

Setting the DRED for parallel system

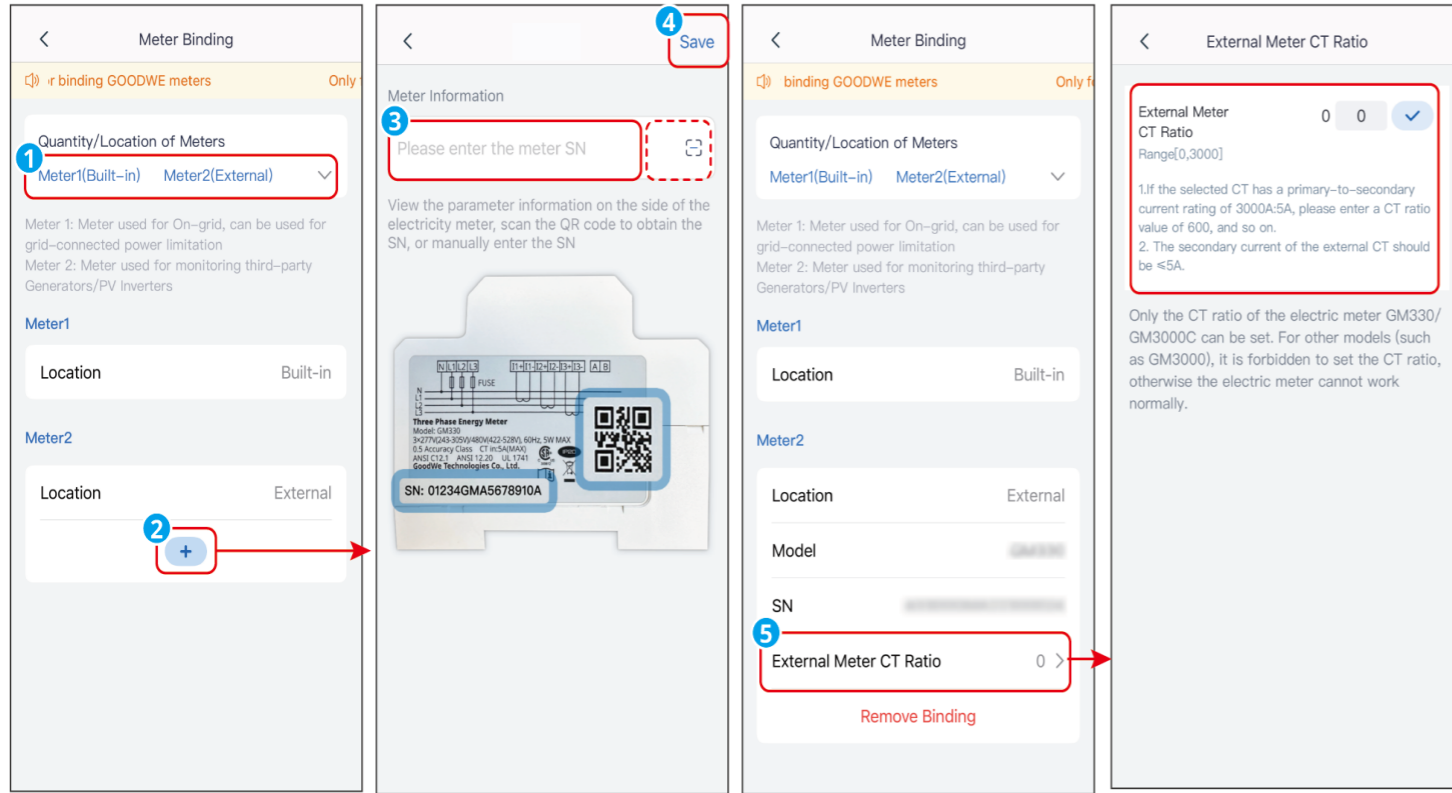
Setting the power limit for parallel system



Setting the RCR for parallel system

Double Meter Setup

Click on the SolarGo APP, go to **Settings > Meter Function > Meter Binding**, and set the meter parameters. Click **+**, manually enter the meter SN or scan the meter SN QR code to bind the external meter. When the bound meter model is GM330, please set the meter CT ratio according to the actual situation, and click **√** to complete the setup. For other meters, there is no need to set the meter CT ratio. To unbind the external meter, please click **Unbind**.



Creating a Power Plant

Create power plants and add equipments via SEMS Portal app.

