

V1.2-2026-01-12

Residential Smart Inverter

ET LV 5.0-20kW

- LX A5.0-30
- GW14.3-BAT-LV-G10
- LX U5.0-30

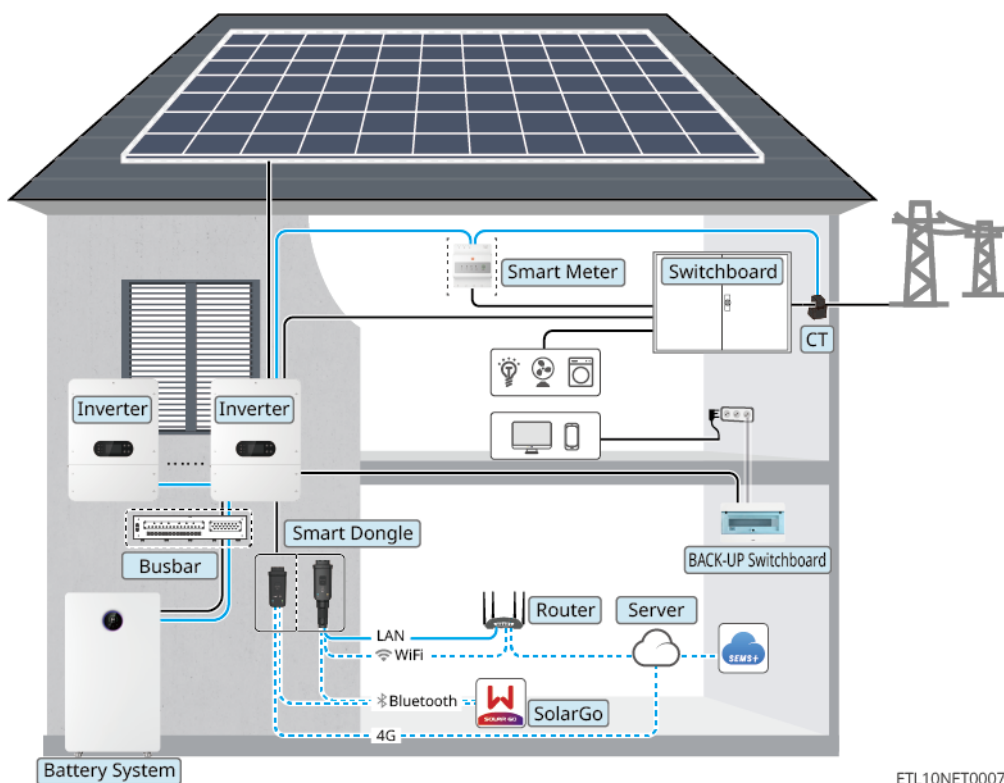
Solutions Guide

GOODWE

Warning

The information in this quick guide is subject to change due to product updates or other reasons. This guide cannot replace the product labels or the safety precautions in the user manual unless otherwise specified. All descriptions in the manual are for guidance only.

Scenario

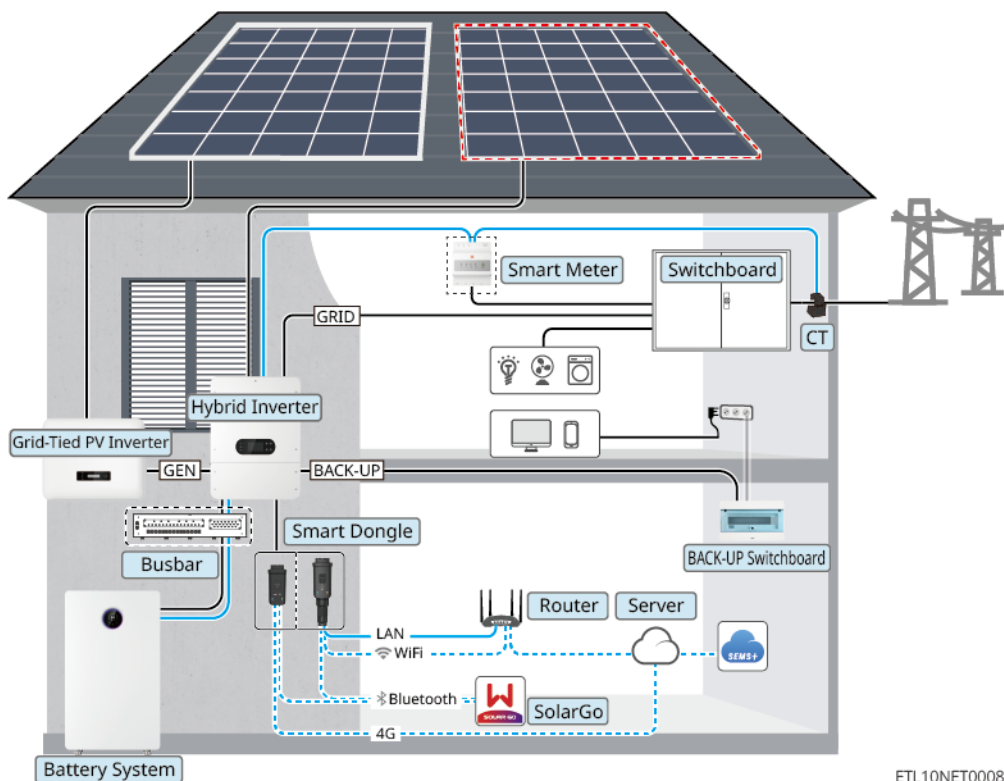


Device	Model	Description
Inverter	GW5K-ET-L-G10 GW6K-ET-L-G10 GW8K-ET-L-G10 GW10K-ET-L-G10 GW12K-ET-L-G10 GW15K-ET-L-G10 GW20K-ET-L-G10 GW12K-ET-LL-G10	<ul style="list-style-type: none"> Inverter supports the connection of generators or large loads. GW5K-ET-L-G10, GW6K-ET-L-G10, GW8K-ET-L-G10, GW10K-ET-L-G10, GW12K-ET-L-G10, GW12K-ET-LL-G10, support only single Battery input. GW15K-ET-L-G10 and GW20K-ET-L-G10 support dual battery connections. The system supports a maximum of 10 Inverter units to form a parallel system, allowing hybrid parallel operation of Inverter with different Power segments in both grid-tied and off-grid modes. However, microgrid functionality is not supported during parallel operation. In a parallel system, if different models of Power are mixed and used, set the model with higher Power as Master inverter. For grid-connected operation, please use the GM330. In a parallel system, each Inverter requires a Installation WiFi/LAN Kit-20, with the software version requirement being V2.5 or higher. The following version requirements must be met for parallel unit networking: <ul style="list-style-type: none"> * All Inverter software versions are consistent. * The ARM software version is 02.108 or above. * Inverter DSP software version is 03.3015 or higher. * SolarGo software version is 6.9.0 or above.
Battery System	LX A5.0-30	A maximum of 30 batteries can be connected in parallel in one system.
	GW14.3-BAT-LV-G10	<ul style="list-style-type: none"> The single Battery The nominal charging and discharging current is 140A; the maximum Charge current is 224A, and the maximum Discharge current is 260A. Supports a maximum of 30 clusters in parallel within the same system. <ul style="list-style-type: none"> * Products with SN code 25C and later default to supporting 30 units in a cluster. * For products before 25C that need to support 30 units in parallel, please contact the GoodWe After-Sales Service Center to upgrade the firmware version. * View product SN code SN code meaning.
	LX U5.0-30	A single system supports up to 30 Battery inparallel clusters.
	Lead Acid Battery	<ul style="list-style-type: none"> Supports connection to lead-acid batteries of AGM, GEL, and Flooded types. The number of batteries that can be connected in series is calculated based on the voltage of lead-acid batteries, and the total voltage of batteries connected in series is not allowed to exceed 60V.

Device	Model	Description
Busbar	BCB-22-WW-0 BCB-32-WW-0 BCB-33-WW-0 (purchase from GoodWe)	<p>Please select the busbar based on the Inverter charging Discharge capacity, load size, and Battery charging Discharge capacity in the system.</p> <ul style="list-style-type: none"> BCB-22-WW-0: <ul style="list-style-type: none"> * When paired with LX A5.0-30, Battery system supports a maximum working current of 720A, a working Power of 36kW, and up to 6 batteries. * When paired with the LX U5.0-30, the Battery system supports a maximum working current of 720A, a working Power of 36kW, and can connect up to 6 Inverter units and 6 Battery units. BCB-32-WW-0: <ul style="list-style-type: none"> * When paired with LX A5.0-30, the Battery system supports a maximum working current of 720A, a working Power of 36kW, and up to 15 Battery units. * When used with GW14.3-BAT-LV-G10, Battery system supports a maximum working current of 720A, working Power of 36kW, and 15 units of Battery. * When paired with the LX U5.0-30, the Battery system supports a maximum working current of 720A, a working Power of 36kW, and can connect up to 6 Inverter units and 8 Battery units. BCB-33-WW-0: <ul style="list-style-type: none"> * Compatible with LX U5.0-30, Battery system supports a maximum working current of 720A, working Power of 36kW, and can connect up to 6 Inverter units and 15 Battery units. When the number of Battery units exceeds 8, two 600A fuses must be connected in parallel. Others: Please prepare busbar based on actual system power and current.
Smart Meter	Built-in Smart Meter (shipped with inverter) GM330 (purchase from GoodWe)	<ul style="list-style-type: none"> Built-in energy meter: Please use the CTs shipped with the box to connect Inverter. <ul style="list-style-type: none"> * CT ratio is 120A:40mA. * When the built-in meter of Inverter does not meet the requirements, you can contact the dealer to purchase the GM330 Smart Meter. GM330: CT can be sourced from GoodWe or purchased separately, with a CT ratio requirement of nA/5A. <ul style="list-style-type: none"> * nA: CT primary side input current, range of n is 200-5000 * 5A: CT secondary output current

Device	Model	Description
Smart Dongle	WiFi/LAN Kit-20	<ul style="list-style-type: none"> Applicable to Inverter single-unit grid connection and parallel-unit grid connection scenarios. Configure device parameters and view operational information via Bluetooth signals for local access, while uploading system operational data to the monitoring platform through WiFi or LAN. Inverter To use one-click upgrade, operation log export, and other functions, ensure that the WiFi/LAN Kit-20 software version is V2.3 or higher.
	4G Kit-CN-G20(China Only)	<ul style="list-style-type: none"> Only applicable to single-unit networking scenarios of Inverter. Configure device parameters and view operational information via Bluetooth signals for local access, while uploading system operational data to the monitoring platform through 4G. Inverter To use one-click upgrade or operation log export functions, ensure the 4G Kit-CN-G20 firmware version is 05 or above.
Heavy Load	-	<p>Only in standalone scenarios does it support SGReady heat pump connection, controlling the heat pump via dry contact signals.</p> <ol style="list-style-type: none"> Total large load Power < GEN port maximum output Power Large Load Power + BACK-UP Power < AC Max.Input Power (Utility grid)
Generat	-	The generator Power must be greater than the total Power of all loads in BACKUP port.

Microgrid Scenario

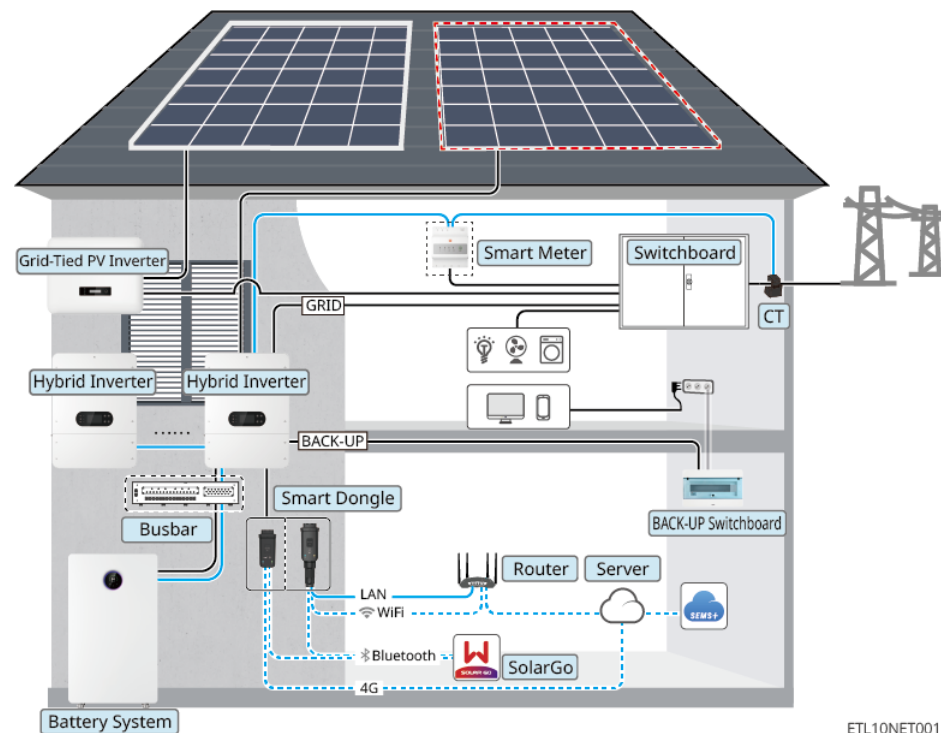


Device	Model	Description
Inverter	GW5K-ET-L-G10	<ul style="list-style-type: none"> In a microgrid scenario, the system only supports the use of one hybrid Inverter. GW5K-ET-L-G10, GW6K-ET-L-G10, GW8K-ET-L-G10, GW10K-ET-L-G10, GW12K-ET-L-G10, GW12K-ET-LL-G10, support only single Battery input. GW15K-ET-L-G10 and GW20K-ET-L-G10 support dual battery connections. In microgrid scenarios, connecting generators is not supported. Parallel operation does not support microgrid functionality.
	GW6K-ET-L-G10	
	GW8K-ET-L-G10	
	GW10K-ET-L-G10	
	GW12K-ET-L-G10	
	GW15K-ET-L-G10	
	GW20K-ET-L-G10	
	GW12K-ET-LL-G10	

Device	Model	Description
Battery System	LX A5.0-30	A single system supports up to 30 Battery inparallel clusters.
	GW14.3-BAT-LV-G10	<ul style="list-style-type: none"> The single Battery The nominal charging and discharging current is 140A; the maximum Charge current is 224A, and the maximum Discharge current is 260A. Supports a maximum of 30 clusters in parallel within the same system. <ul style="list-style-type: none"> * Products with SN code 25C and later default to supporting 30 units in a cluster. * For products before 25C that need to support 30 units in parallel, please contact the GoodWe After-Sales Service Center to upgrade the firmware version. * View product SN code SN code meaning.
	LX U5.0-30	A single system supports up to 30 Battery inparallel clusters.
Lead Acid Battery		<ul style="list-style-type: none"> Supports connection to lead-acid batteries of AGM, GEL, and Flooded types. The number of batteries that can be connected in series is calculated based on the voltage of lead-acid batteries, and the total voltage of batteries connected in series is not allowed to exceed 60V.
Busbar		<p>Please select the busbar based on the Inverter charging Discharge capacity, load size, and Battery charging Discharge capacity in thesystem.</p> <ul style="list-style-type: none"> BCB-22-WW-0: <ul style="list-style-type: none"> * When paired with LX A5.0-30, Battery system supports a maximum working current of 720A, a working Power of 36kW, and up to 6 batteries. * When paired with the LX U5.0-30, the Battery system supports a maximum working currentof 720A, a working Power of 36kW, and canconnect up to 6 Inverter units and 6 Battery units. BCB-32-WW-0: <ul style="list-style-type: none"> * When paired with LX A5.0-30, the Battery system supports a maximum working current of 720A, a working Power of 36kW, and up to 15 Battery units. * When used with GW14.3-BAT-LV-G10, Battery system supports a maximum working currentof 720A, working Power of 36kW, and 15units of Battery. * When paired with the LX U5.0-30, the Battery system supports a maximum working currentof 720A, a working Power of 36kW, and canconnect up to 6 Inverter units and 8 Batteryunits. BCB-33-WW-0: <ul style="list-style-type: none"> * Compatible with LX U5.0-30, Battery system supports a maximum working current of720A, working Power of 36kW, and canconnect up to 6 Inverter units and 15 Batteryunits. When the number of Battery units exceeds 8, two 600A fuses must beconnected in parallel. <p>Others: Please prepare busbar based on actual system power and current.</p>
	BCB-22-WW-0	
	BCB-32-WW-0	
	BCB-33-WW-0 (purchase from GoodWe)	

Device	Model	Description
Smart Meter	Built-in Smart Meter (shipped with inverter) GM330 (purchase from GoodWe)	<ul style="list-style-type: none"> Built-in energy meter: Please use the CTs shipped with the box to connect Inverter. * CT ratio is 120A: 40mA. When the built-in meter of Inverter does not meet the requirements, you can contact the dealer to purchase the GM330 Smart Meter. GM330: CT can be sourced from GoodWe or purchased separately, with a CT ratio requirement of nA/5A. * nA: CT primary side input current, range of n is 200-5000 * 5A: CT secondary output current
Smart Dongle	WiFi/LAN Kit-20	<ul style="list-style-type: none"> Applicable to Inverter single-unit gridconnection and parallel-unit grid connectionscenarios. Configure device parameters and viewoperational information via Bluetooth signalsfor local access, while uploading systemoperational data to the monitoring platformthrough WiFi or LAN. InverterTo use one-click upgrade, operation logexport, and other functions, ensure that theWiFi/LAN Kit-20 software version is V2.3 or higher.
	4G Kit-CN-G20(China Only)	<ul style="list-style-type: none"> Only applicable to single-unit networkingscenarios of Inverter. Configure device parameters and view operational information via Bluetooth signalsfor local access, while uploading system operational data to the monitoring plat form through 4G. InverterTo use one-click upgrade or operation log export functions, ensure the 4G Kit-CN-G20 firmware version is 05 or above.
Gridtied PV inverter	-	<ul style="list-style-type: none"> It is recommended to use GoodWe brand gridtied PV inverter, which supports the use of thirdparty grid-tied PV inverter. In the microgrid system, ensure that grid-tied PV inverter-Nominal output power \leq hybrid InverterNominal output power. When the microgrid system is in the on-grid state, if Power limitation is required, please ensure: <ul style="list-style-type: none"> * Hybrid Inverter needs to pass through SolarGo APP. Export power limit Set in the interface; grid-tied PV inverter Please configure according to the actual tools used. * To ensure the grid-tied PV inverter can operate continuously for power generation, it is necessary to use the SolarGo APP.Microgrid modeThe interface adjusts the output Power of the hybrid Inverter. <p>Note: The output Power control accuracy varies with different grid-tied PV inverter. Please set the Export power limit parameter value according to actual conditions.</p>

Coupling scenario



Device	Model	Description
Inverter	GW5K-ET-L-G10 GW6K-ET-L-G10 GW8K-ET-L-G10 GW10K-ET-L-G10 GW12K-ET-L-G10 GW15K-ET-L-G10 GW20K-ET-L-G10 GW12K-ET-LL-G10	<ul style="list-style-type: none"> Inverter supports the connection of generators or large loads. GW5K-ET-L-G10, GW6K-ET-L-G10, GW8K-ET-L-G10, GW10K-ET-L-G10, GW12K-ET-L-G10, GW12K-ET-LL-G10, support only single Battery input. GW15K-ET-L-G10 and GW20K-ET-L-G10 support dual battery connections. The system supports a maximum of 10 Inverter units to form a parallel system, allowing hybrid parallel operation of Inverter with different Power segments in both grid-tied and off-grid modes. However, microgrid functionality is not supported during parallel operation. In a parallel system, if different models of Power are mixed and used, set the model with higher Power as Master inverter. For grid-connected operation, please use the GM330. In a parallel system, each Inverter requires a Installation WiFi/LAN Kit-20, with the software version requirement being V2.5 or higher. The following version requirements must be met for parallel unit networking: <ul style="list-style-type: none"> * All Inverter software versions are consistent. * The ARM software version is 02.108 or above. * Inverter DSP software version is 03.3015 or higher. * SolarGo software version is 6.9.0 or above.

Device	Model	Description
Battery System	LX A5.0-30	A single system supports up to 30 Battery inparallel clusters.
	GW14.3-BAT-LV-G10	<ul style="list-style-type: none"> The single Battery The nominal charging and discharging current is 140A; the maximum Charge current is 224A, and the maximum Discharge current is 260A. Supports a maximum of 30 clusters in parallel within the same system. Products with SN code 25C and later default to supporting 30 units in a cluster. For products before 25C that need to support 30 units in parallel, please contact the GoodWe After-Sales Service Center to upgrade the firmware version. View product SN code SN code meaning.
	LX U5.0-30	A single system supports up to 30 Battery inparallel clusters.
	Lead Acid Battery	<ul style="list-style-type: none"> Supports connection to lead-acid batteries of AGM, GEL, and Flooded types. The number of batteries that can be connected in series is calculated based on the voltage of lead-acid batteries, and the total voltage of batteries connected in series is not allowed to exceed 60V.
Busbar	BCB-22-WW-0 BCB-32-WW-0 BCB-33-WW-0 (purchase from GoodWe)	<p>Please select the busbar based on the Inverter charging Discharge capacity, load size, and Battery charging Discharge capacity in the system.</p> <ul style="list-style-type: none"> BCB-22-WW-0: <ul style="list-style-type: none"> When paired with LX A5.0-30, Battery system supports a maximum working current of 720A, a working Power of 36kW, and up to 6 batteries. When paired with the LX U5.0-30, the Battery system supports a maximum working currentof 720A, a working Power of 36kW, and canconnect up to 6 Inverter units and 6 Batteryunits. BCB-32-WW-0: <ul style="list-style-type: none"> When paired with LX A5.0-30, the Battery system supports a maximum working current of 720A, a working Power of 36kW, and up to15 Battery units. When used with GW14.3-BAT-LV-G10, Battery system supports a maximum working currentof 720A, working Power of 36kW, and 15units of Battery. When paired with the LX U5.0-30, the Battery system supports a maximum working currentof 720A, a working Power of 36kW, and canconnect up to 6 Inverter units and 8 Batteryunits. BCB-33-WW-0: <ul style="list-style-type: none"> Compatible with LX U5.0-30, Battery system supports a maximum working current of720A, working Power of 36kW, and canconnect up to 6 Inverter units and 15 Batteryunits. When the number of Battery units exceeds 8, two 600A fuses must beconnected in parallel. Others: Please prepare busbar based on actual system power and current.

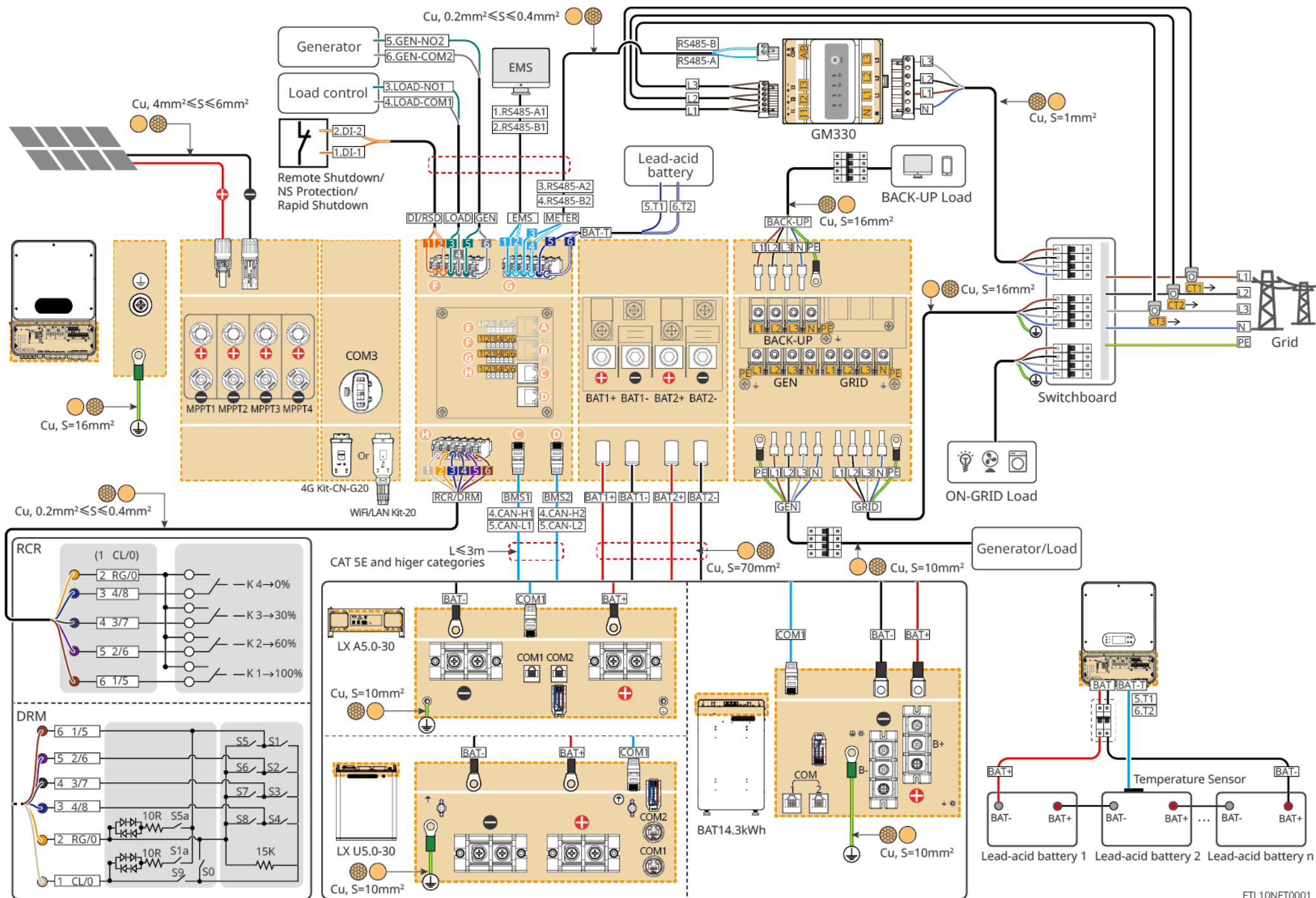
Device	Model	Description
Smart Meter	Built-in Smart Meter (shipped with inverter) GM330 (purchase from GoodWe)	<ul style="list-style-type: none"> Built-in energy meter: Please use the CTs shipped with the box to connect Inverter. <ul style="list-style-type: none"> CT ratio is 120A:40mA. When the built-in meter of Inverter does not meet the requirements, you can contact the dealer to purchase the GM330 Smart Meter. GM330: CT can be sourced from GoodWe or purchased separately, with a CT ratio requirement of nA/5A. <ul style="list-style-type: none"> nA: CT primary side input current, range of n is 200-5000 5A: CT secondary output current
Smart Dongle	WiFi/LAN Kit-20	<ul style="list-style-type: none"> Applicable to Inverter single-unit gridconnection and parallel-unit grid connectionscenarios. Configure device parameters and view operational information via Bluetooth signalsfor local access, while uploading system operational data to the monitoring platform through WiFi or LAN. InverterTo use one-click upgrade, operation logexport, and other functions, ensure that theWiFi/LAN Kit-20 software version is V2.3 orhigher.
	4G Kit-CN-G20(China Only)	<ul style="list-style-type: none"> Only applicable to single-unit networking scenarios of Inverter. Configure device parameters and view operational information via Bluetooth signalsfor local access, while uploading system operational data to the monitoring plat form through 4G. InverterTo use one-click upgrade or operation log export functions, ensure the 4G Kit-CN-G20 firmware version is 05 or above.
Gridtied PV inverter	-	<ul style="list-style-type: none"> It is recommended to use GoodWe brand gridtied PV inverter, which supports the use of thirdparty grid-tied PV inverter. In the coupled scenario, ensure that grid-tied PV inverterNominal output power ≤ hybrid InverterNominal output power. When the coupling system is in the on-grid state, if Power limitation is required, please ensure: <ul style="list-style-type: none"> Hybrid Inverter needs to pass through SolarGo APP Export power limitSet in the interface; grid-tied PV inverter Please configure according to the actual tools used. <p>Note: The output Power control accuracy varies for different grid-tied PV inverter. Please set the Export power limit parameter value according to the actual situation.</p>
Heavy Load	-	<p>Only in standalone scenarios does it support SGReady heat pump connection, controlling theheat pump via dry contact signals.</p> <ol style="list-style-type: none"> Total large load Power < GEN port maximumoutput Power Large Load Power + BACK-UP Power < AC Max.Input Power (Utility grid)
Generat	-	The generator Power must be greater than thetotal Power of all loads in BACKUP port.

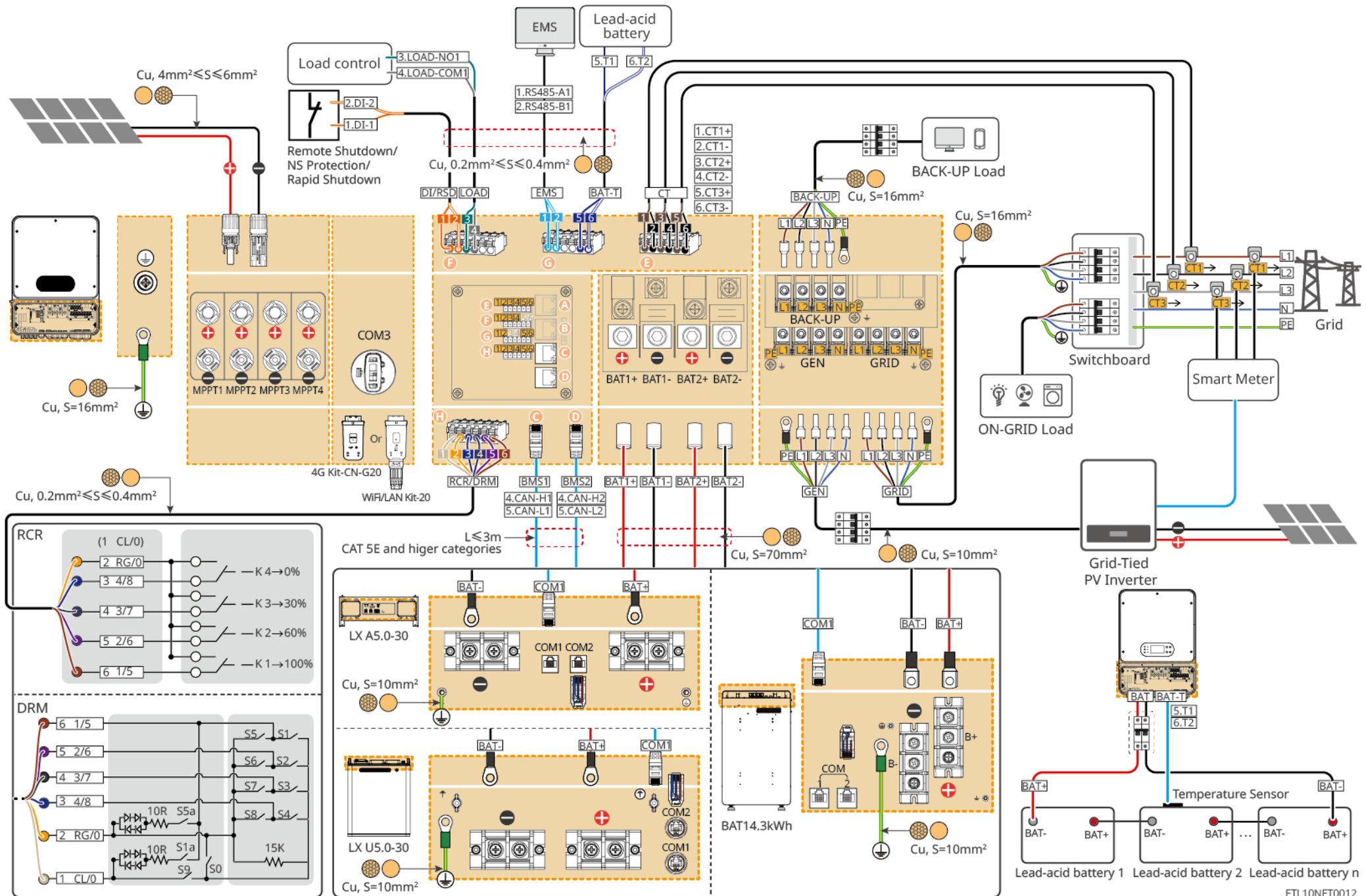
02 Installations

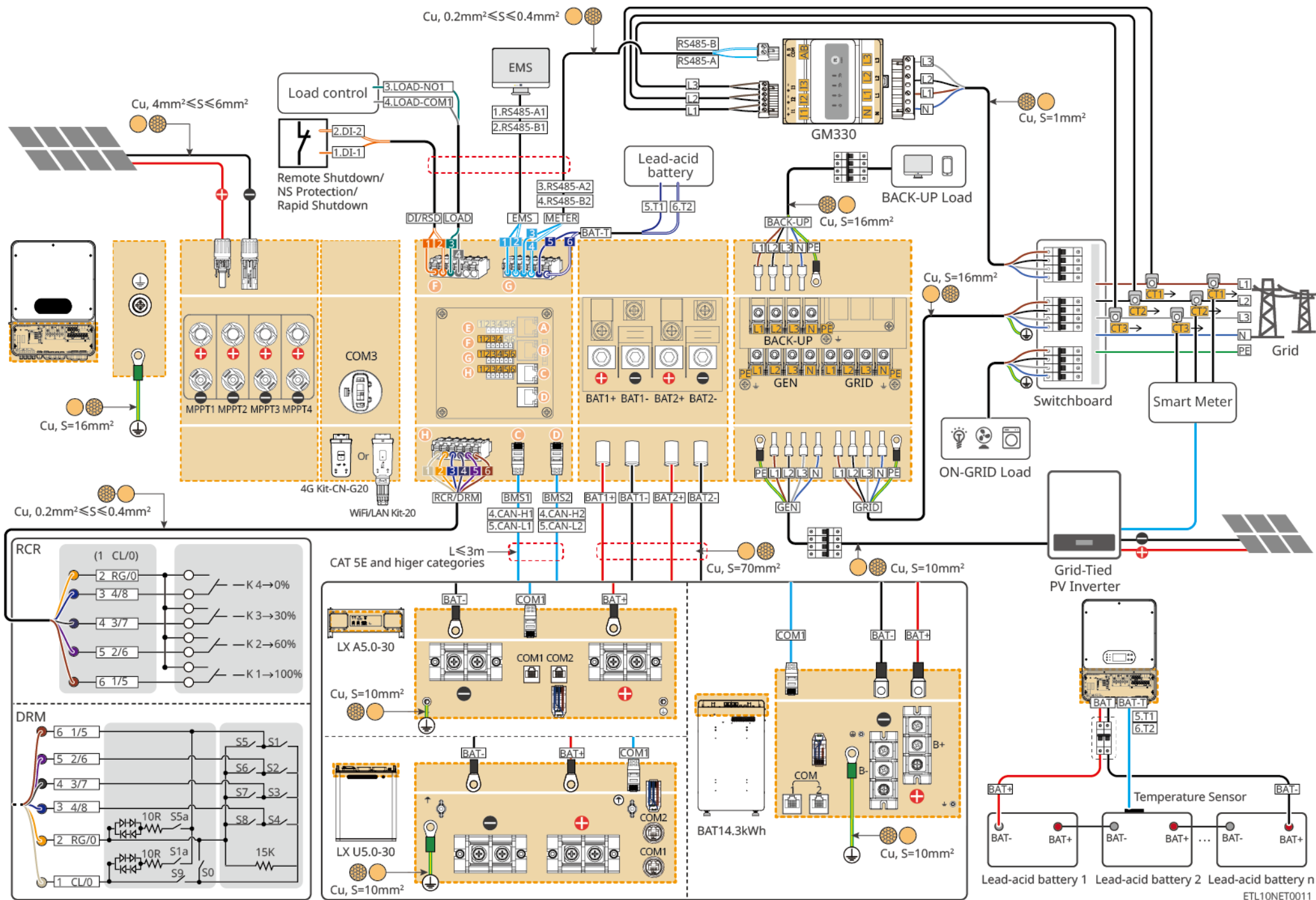
Steps	1 Installation	2 PE	3 PV	4 Battery	5 AC	6 COM	7 Communication module
Inverter							WiFi/LAN Kit-20 4G Kit-CN-G20
Tools	1 D: 65mm Φ: 13mm 2 M10 24N-m 3 M6 3N-m	M5 2.5-3N-m	Recommend: PV-CZM-61100 	2 M16x2.0 13N-m 3 M25 5-6N-m	2 M8 8N-m 4 M32 7-8N-m	3 M5 2.5-3N-m 5 M40 9-10N-m	2 M25 5-6N-m

Steps	1 Installation				2 PE	3 Battery	4 COM	
Battery	LX A5.0-30	BAT14.3kWh	LX U5.0-30		LX A5.0-30 BAT14.3kWh LX U5.0-30	LX A5.0-30 LX U5.0-30 BAT14.3kWh	COM1 COM2	
Tools	 M4 1.4N-m M6 6N-m	1 D: 80mm Φ: 8mm 2 3 M6 6N-m M4 1.4N-m	1 2 3 D: 80mm Φ: 10mm ST5.5 4N-m M5 4N-m	1 2 3 M10 15N-m M5 4N-m	1a 2a 3a M5 4N-m D: 80mm Φ: 8mm 1b 2b 3b ST5.5*70 10N-m M10 6N-m	M8 12N-m M5 4N-m	M10 15N-m	

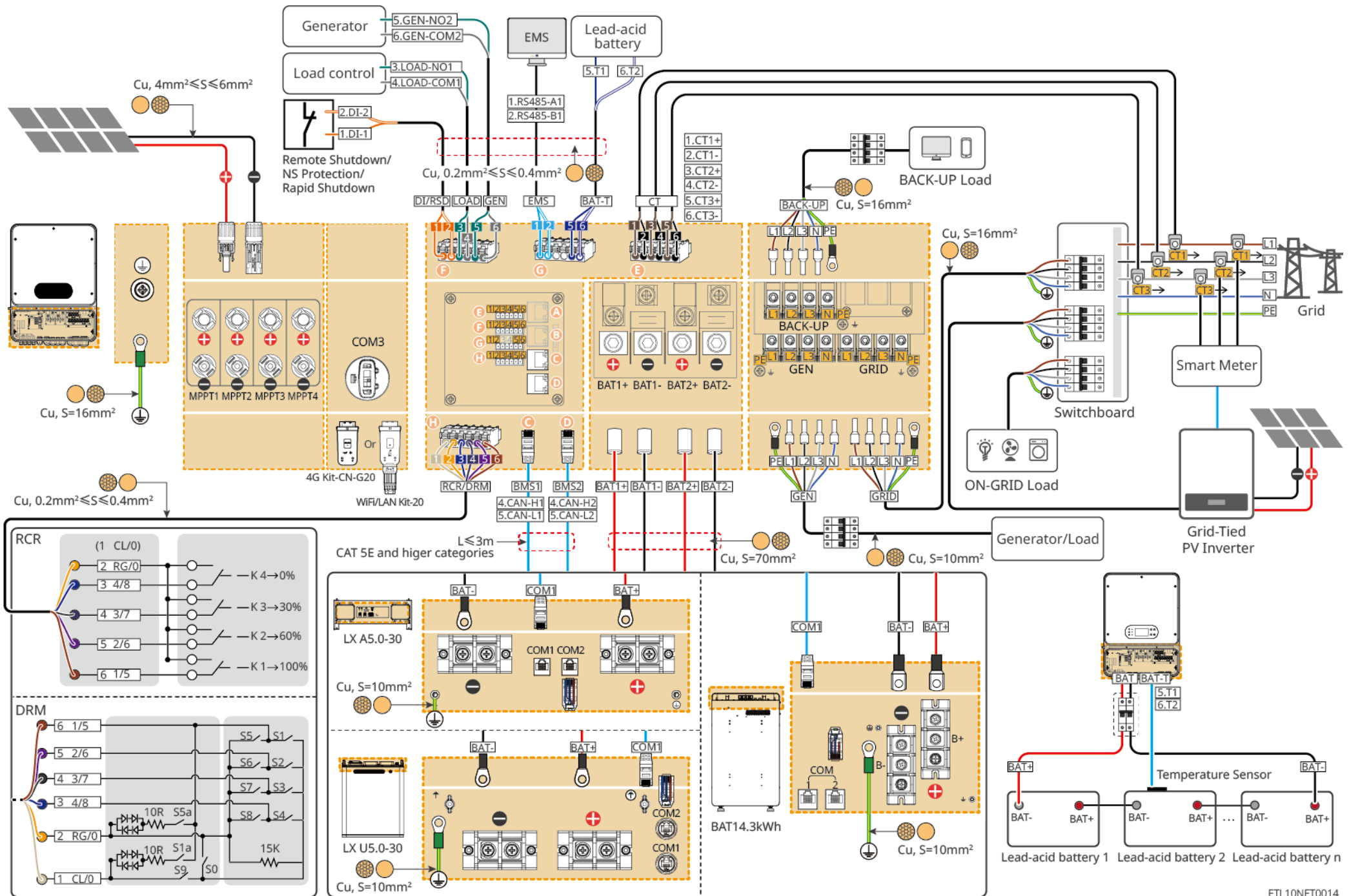
Steps	1 Installation	2 Cable Connections	3 Power	4 Commissioning
Smart meter	GM330 	GM330 RS485B RS485A 0.5N-m N/L1/L2/L3 I1/I2/I3 1-1.5N-m 0.5N-m	 AC breaker	 SolarGo App SEMS+ App

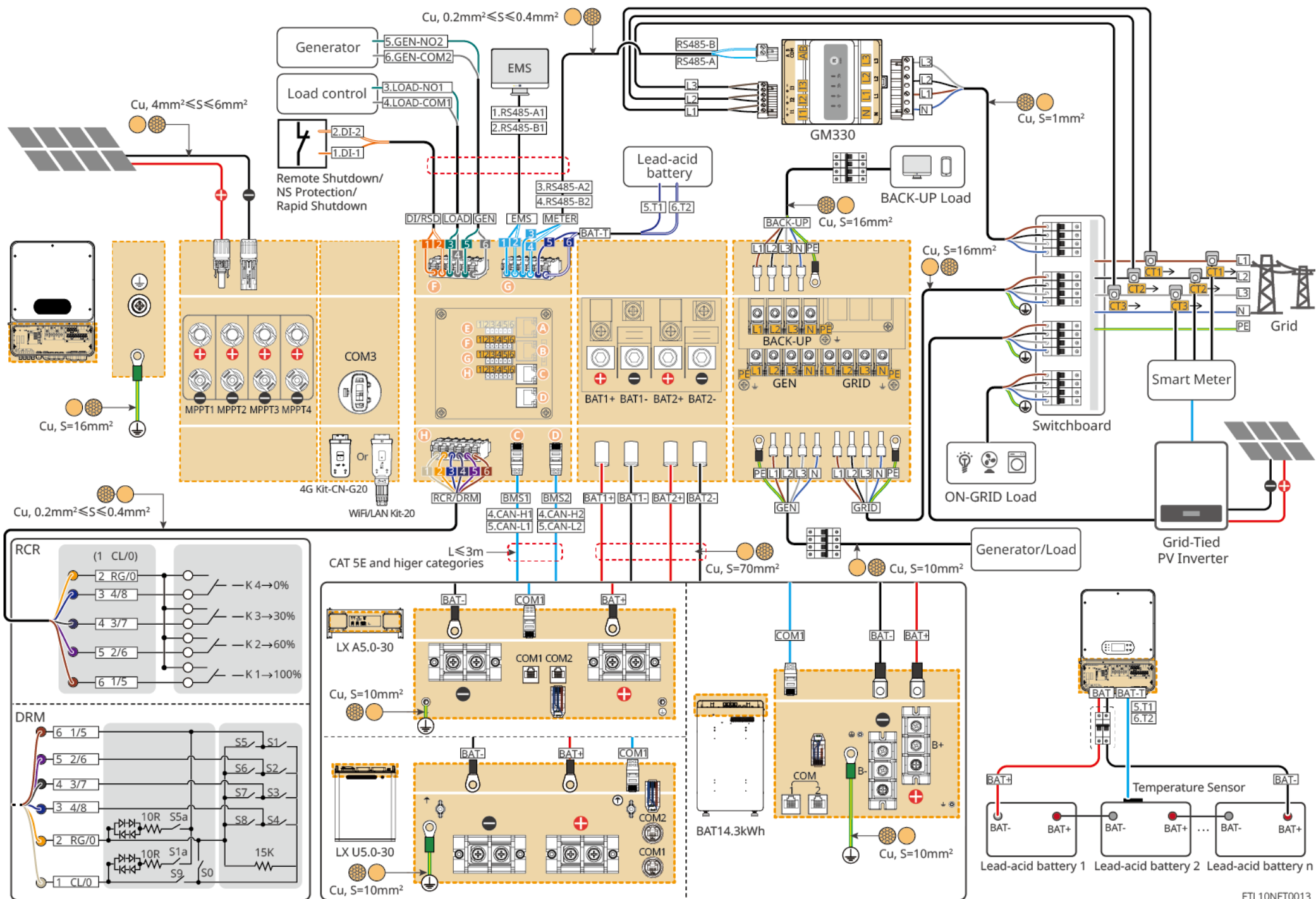


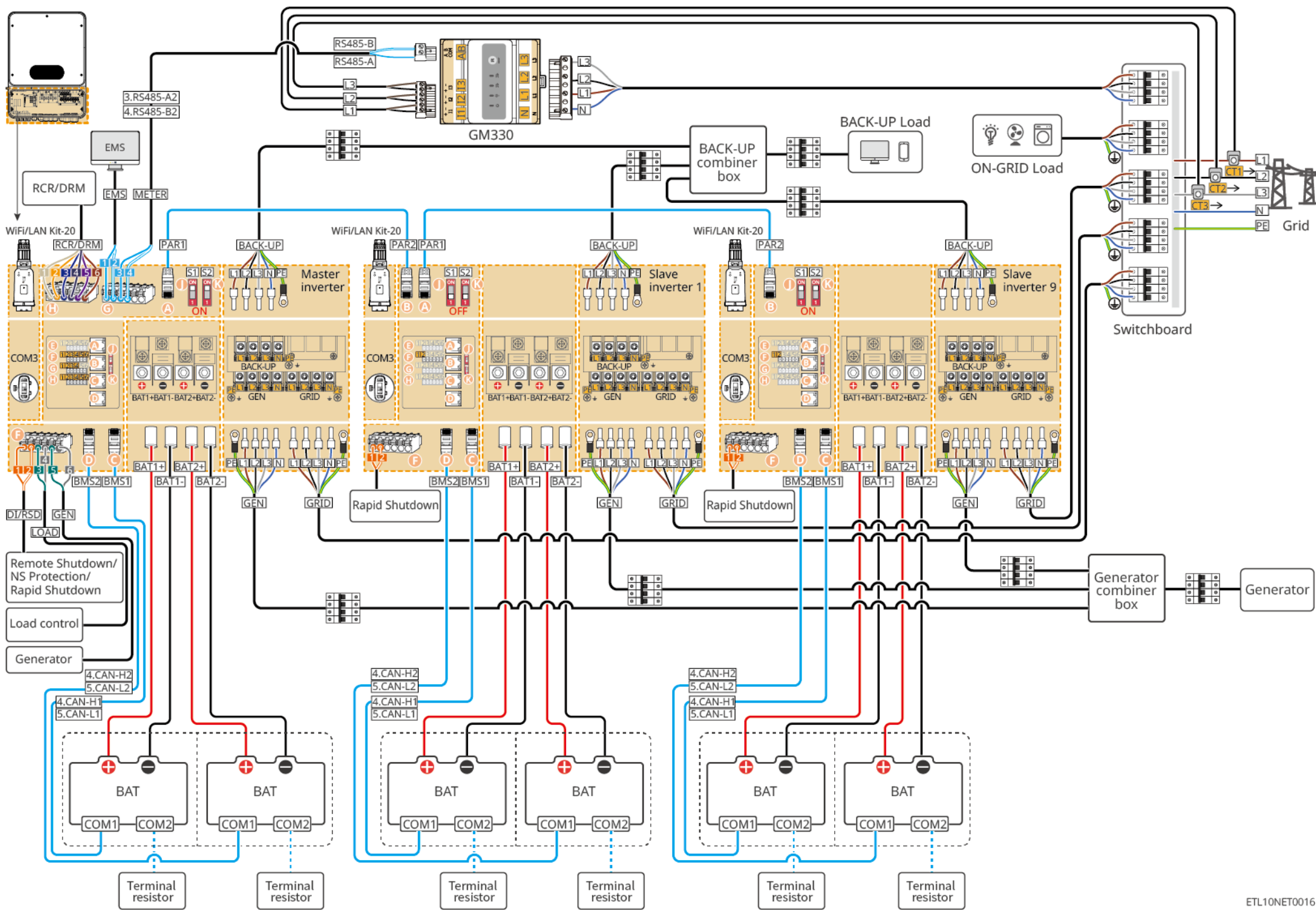


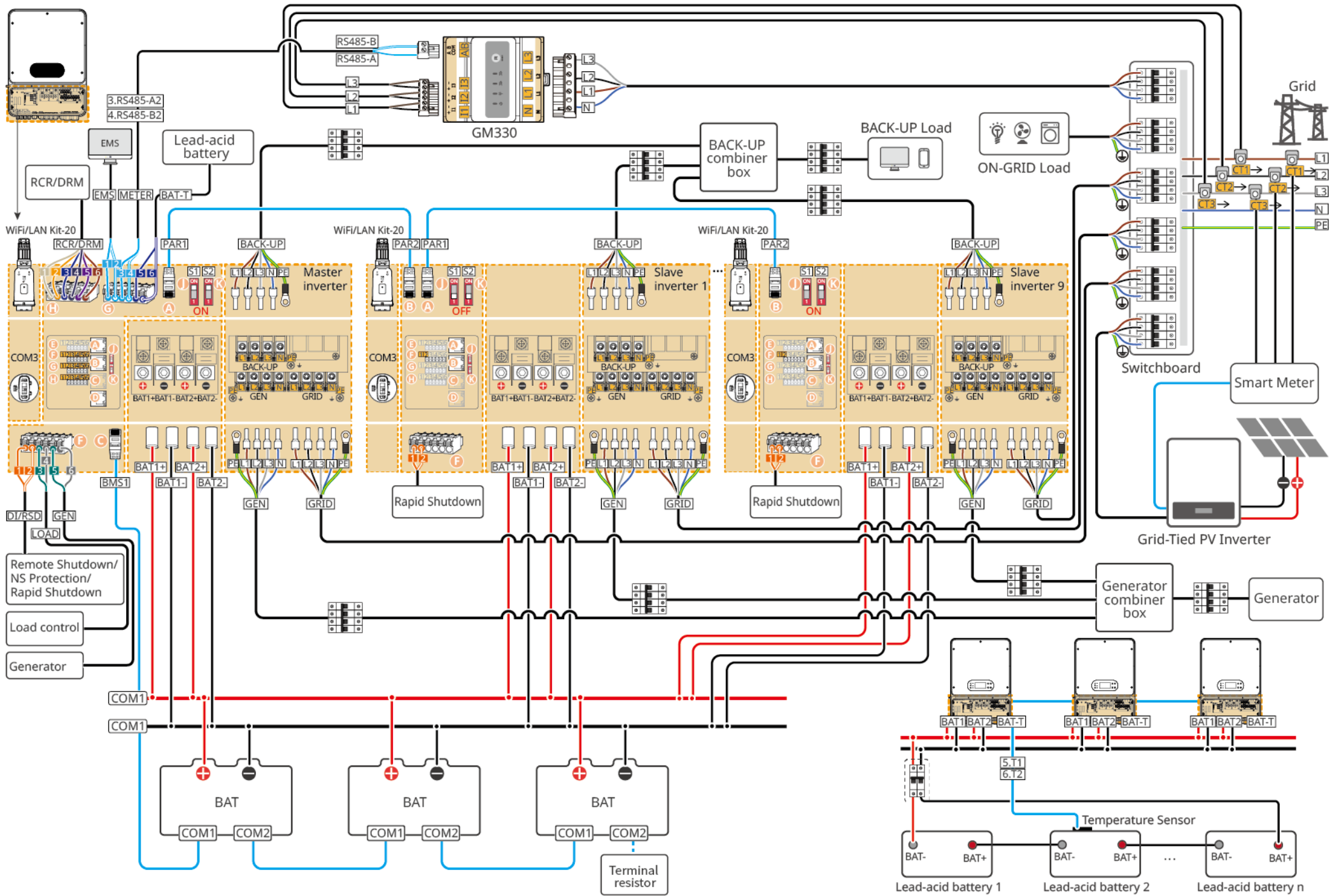


03 Wiring Diagram | Coupling scenario (Single Inverter+ Built-in meter matching scenario+ LX A5.0-30/ GM14.3-BAT-LV-G10/LX U5.0-30/ Lead Acid Battery + WiFi/LAN or 4G)



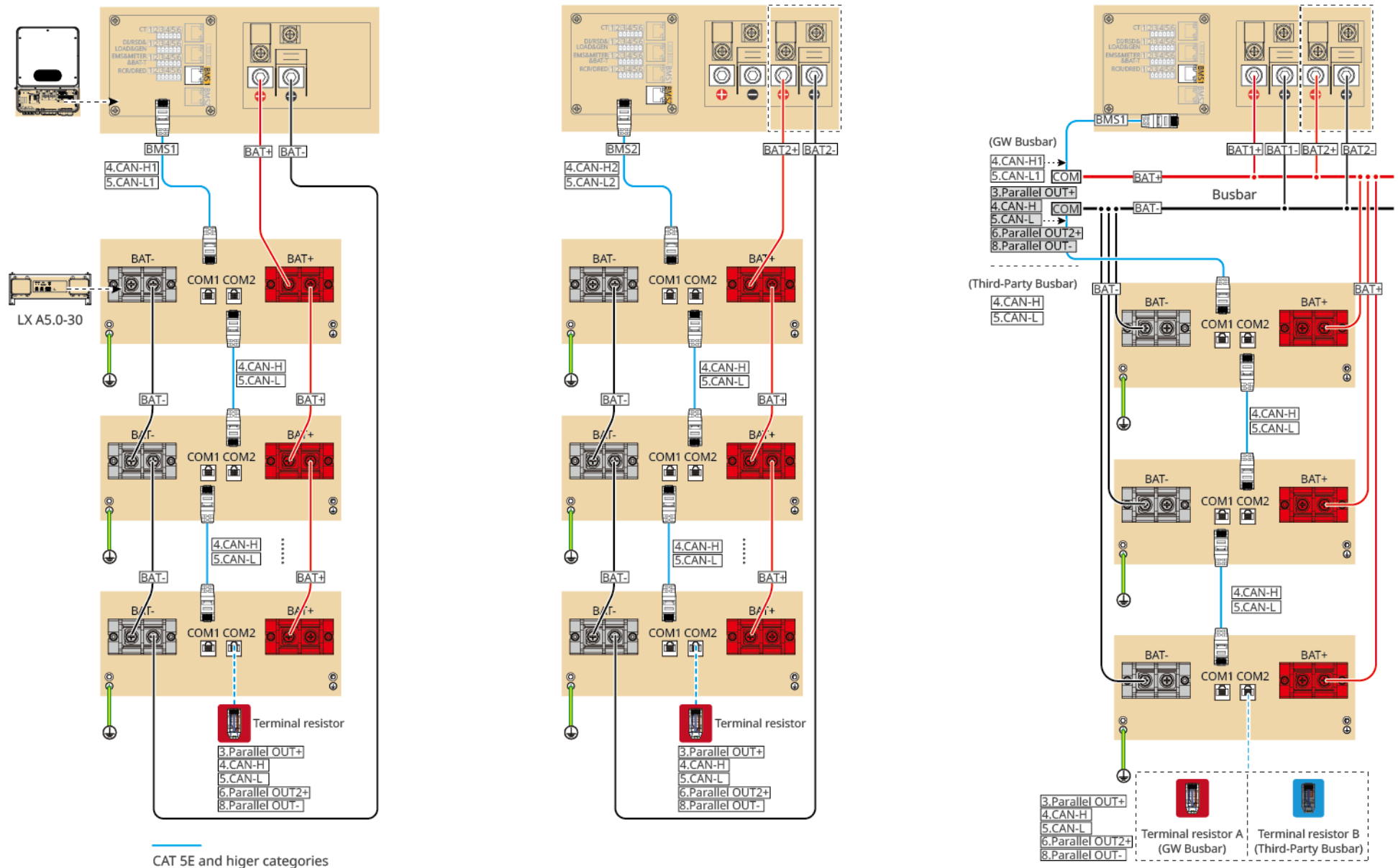






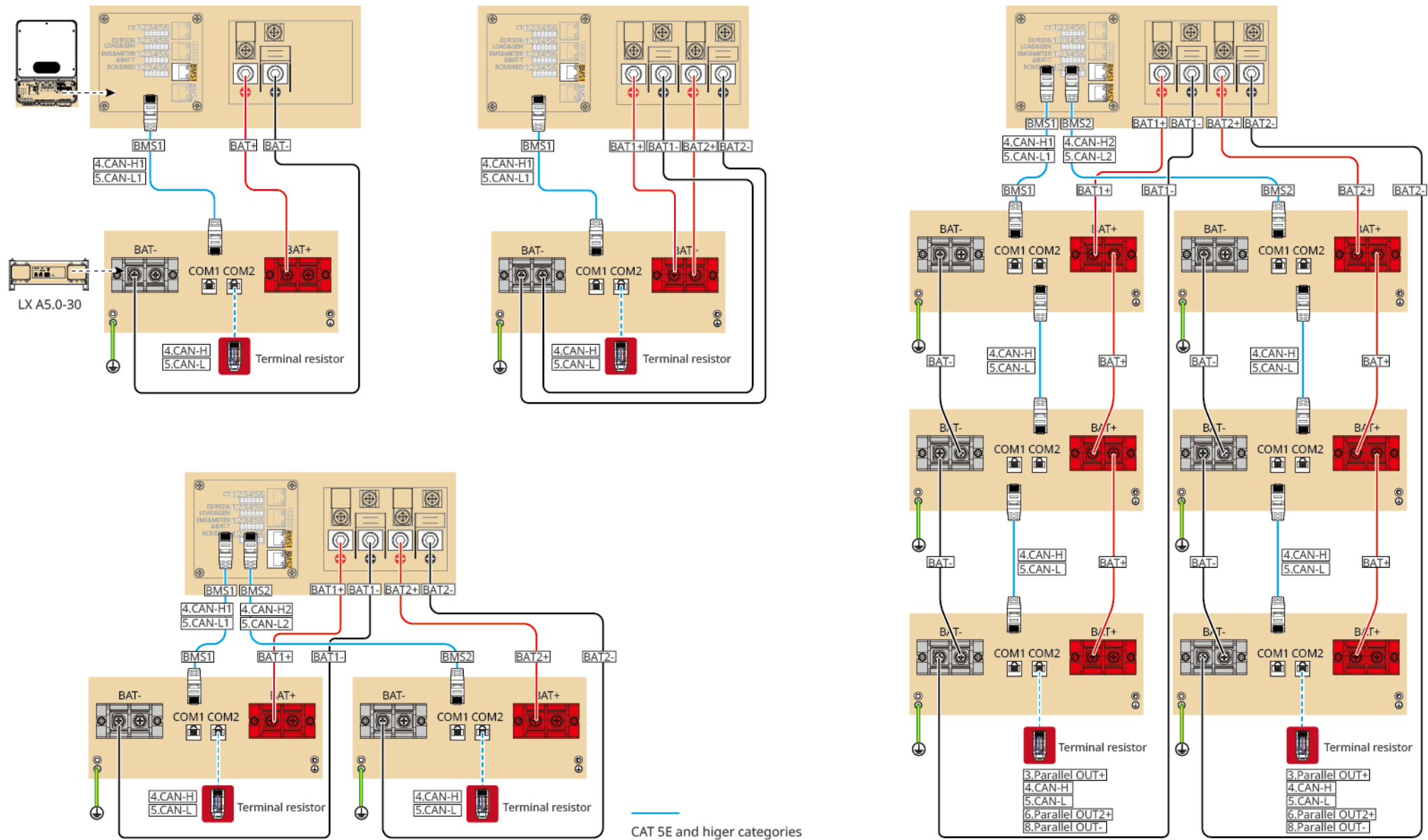
03 Wiring Diagram | Battery System

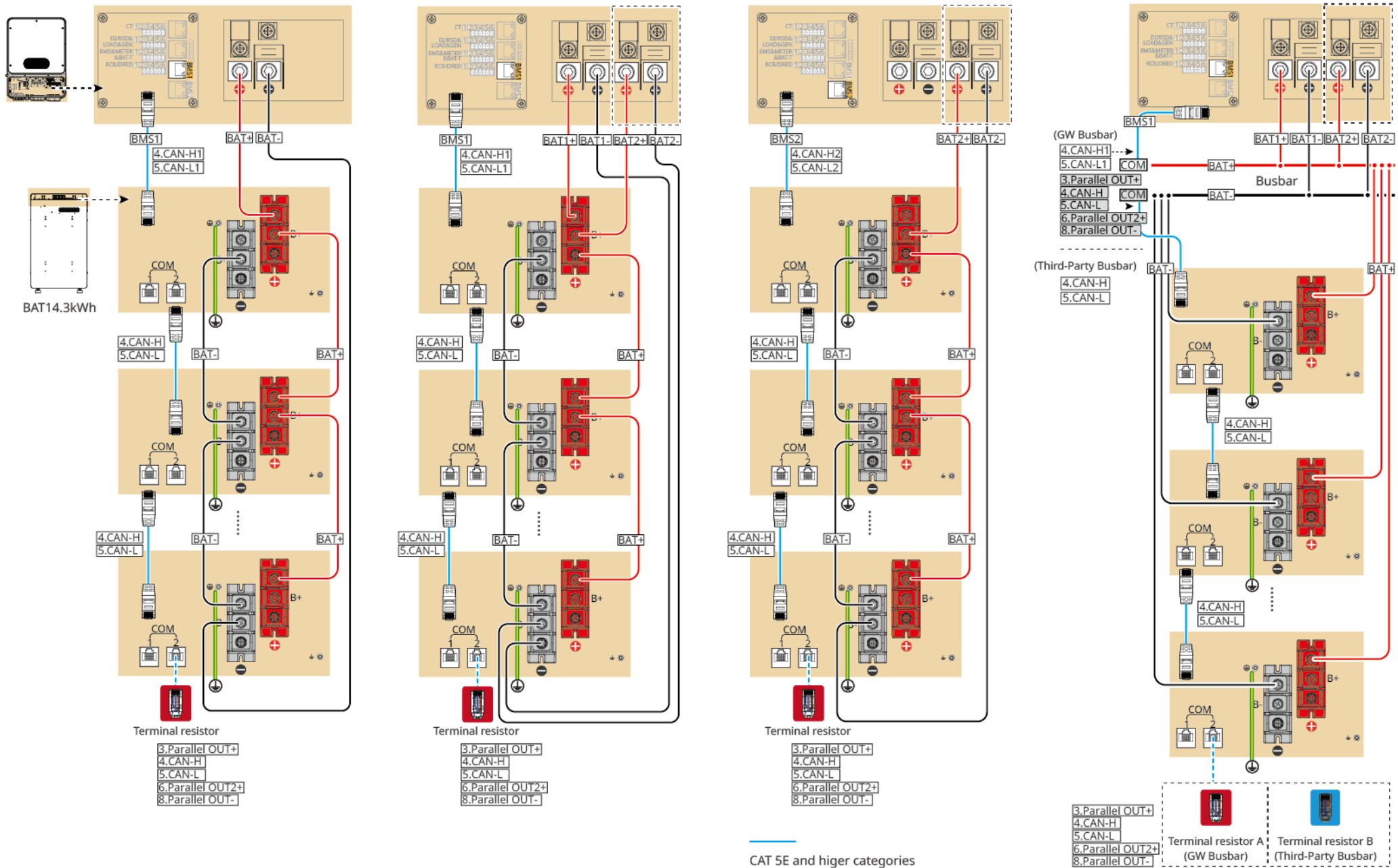
The inverter supports a maximum of 15 batteries connected in parallel on a single circuit. If you require more batteries to be connected in parallel, please contact the GoodWe After-Sales Service Center.



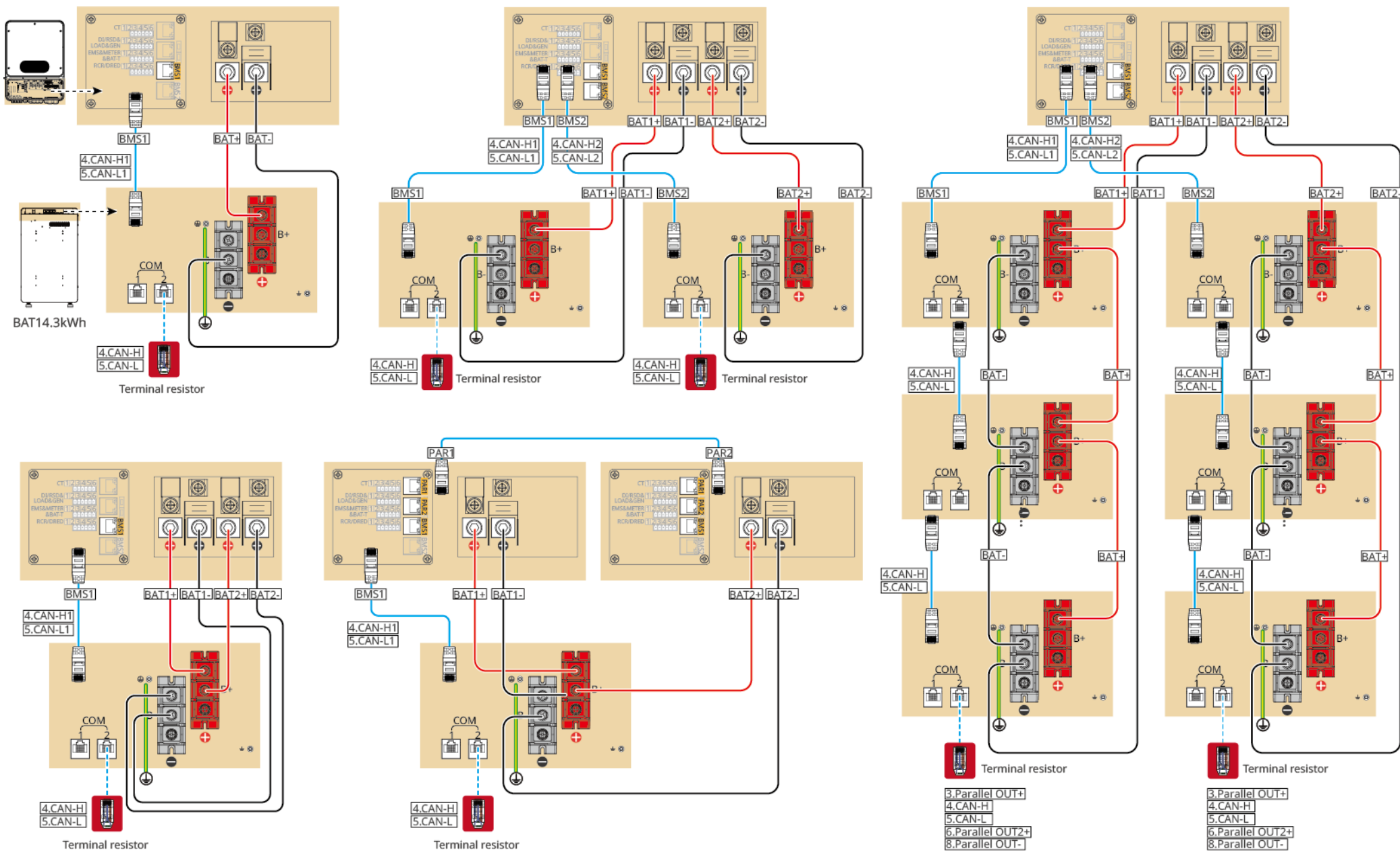
CAT 5E and higher categories

ETL10NET003



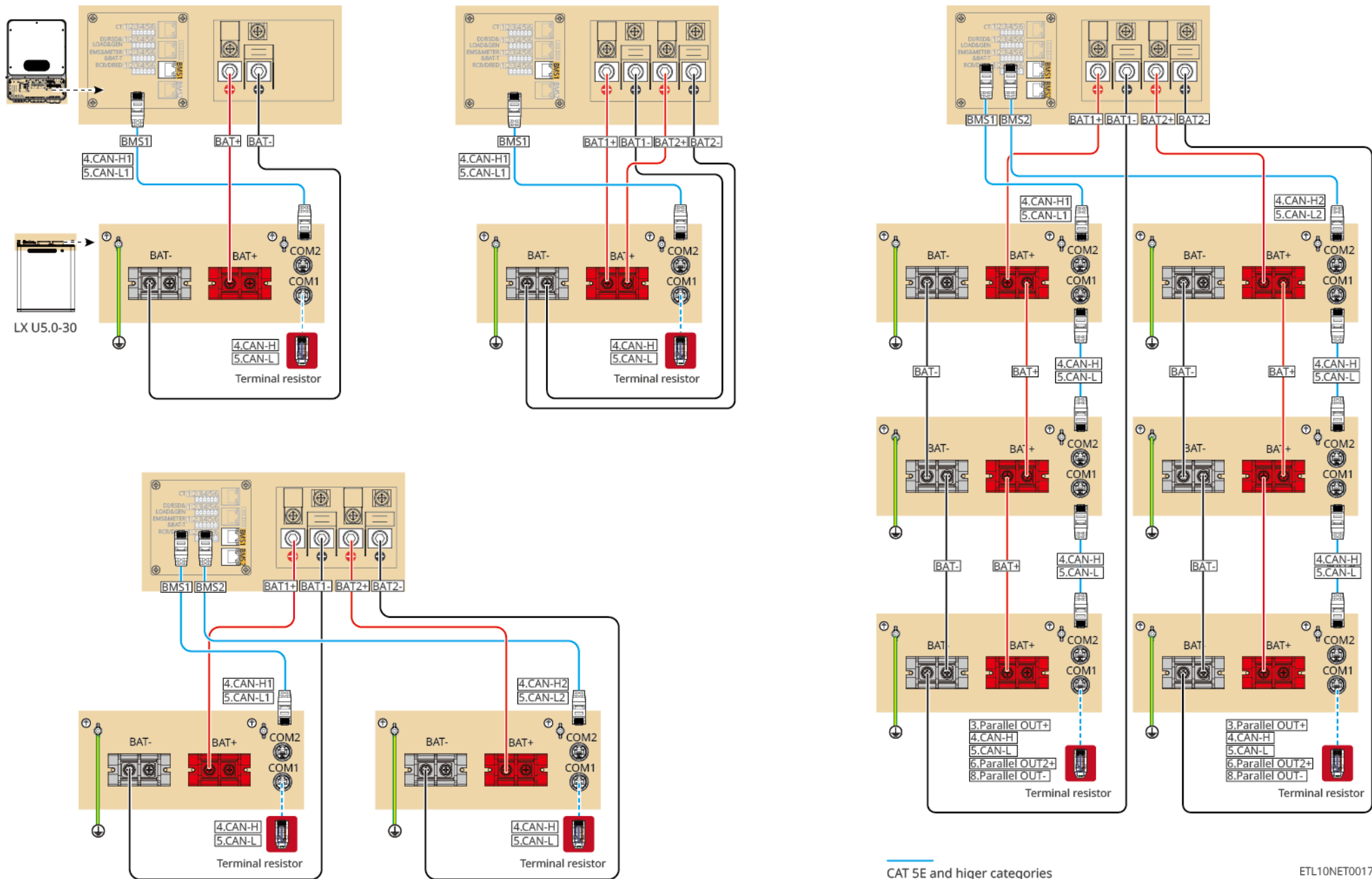


ETL10NET0004

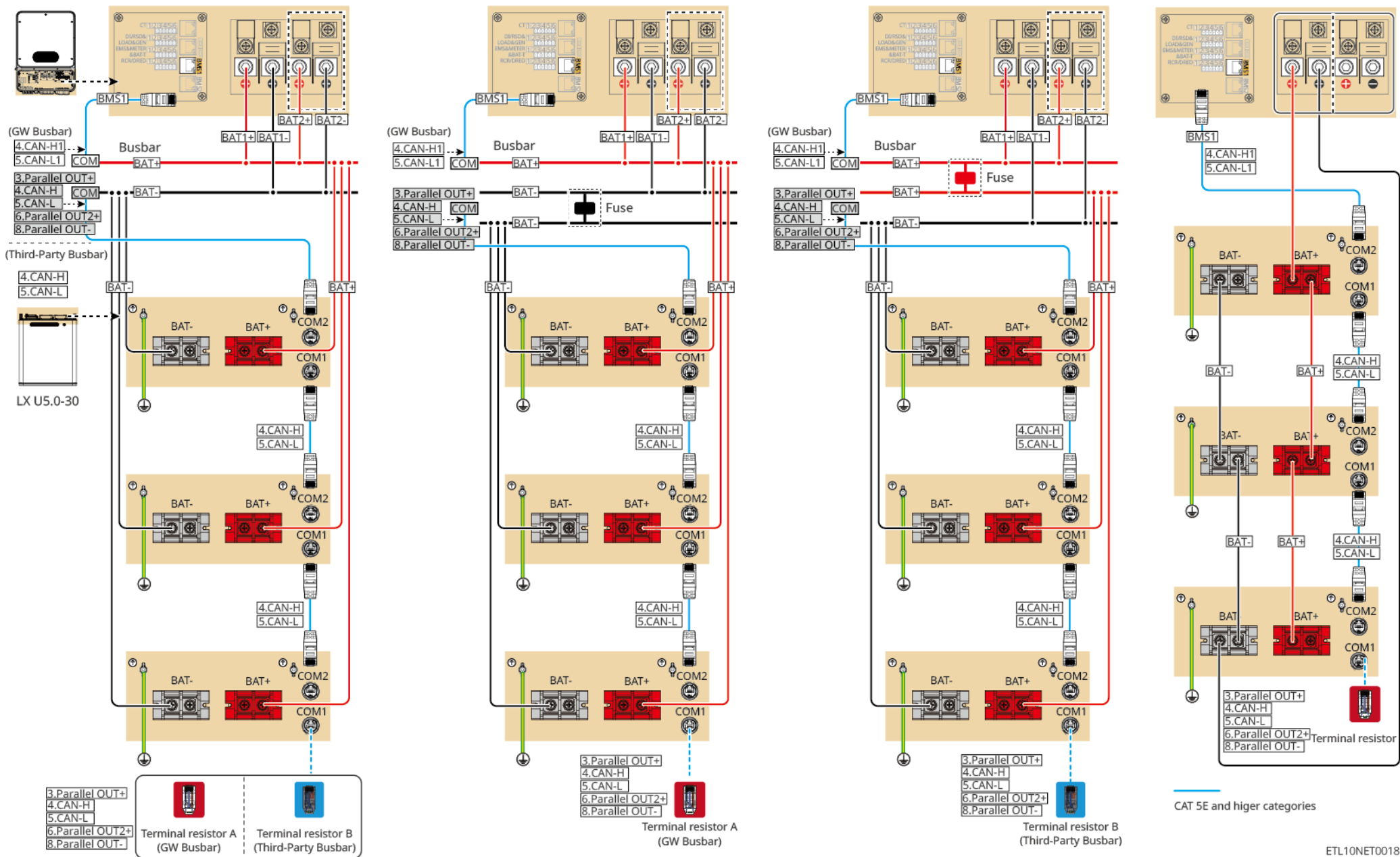


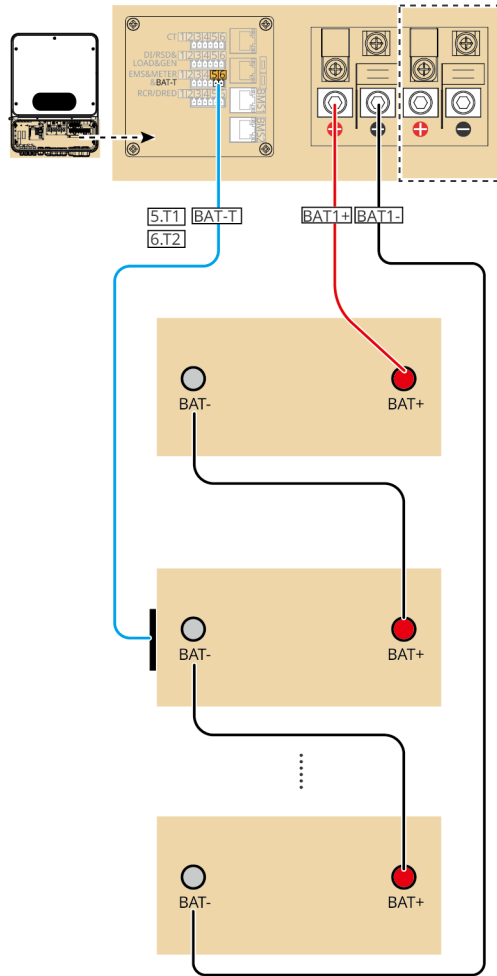
CAT 5E and higher categories

ETL10NET009

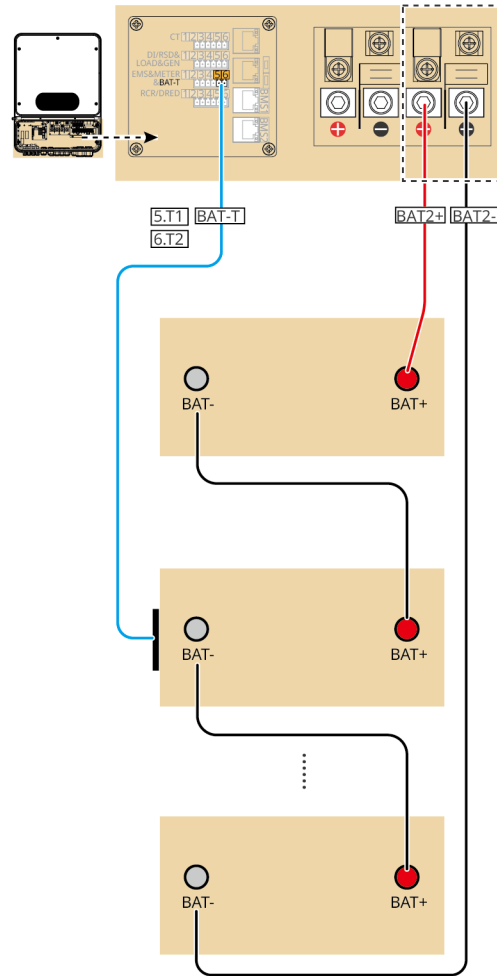


ETL10NET0017

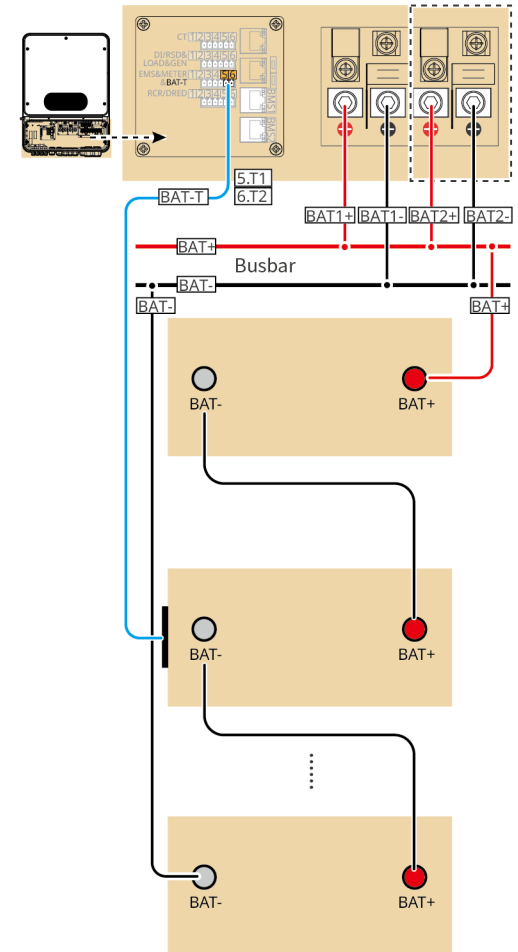




Lead-acid battery



Lead-acid battery

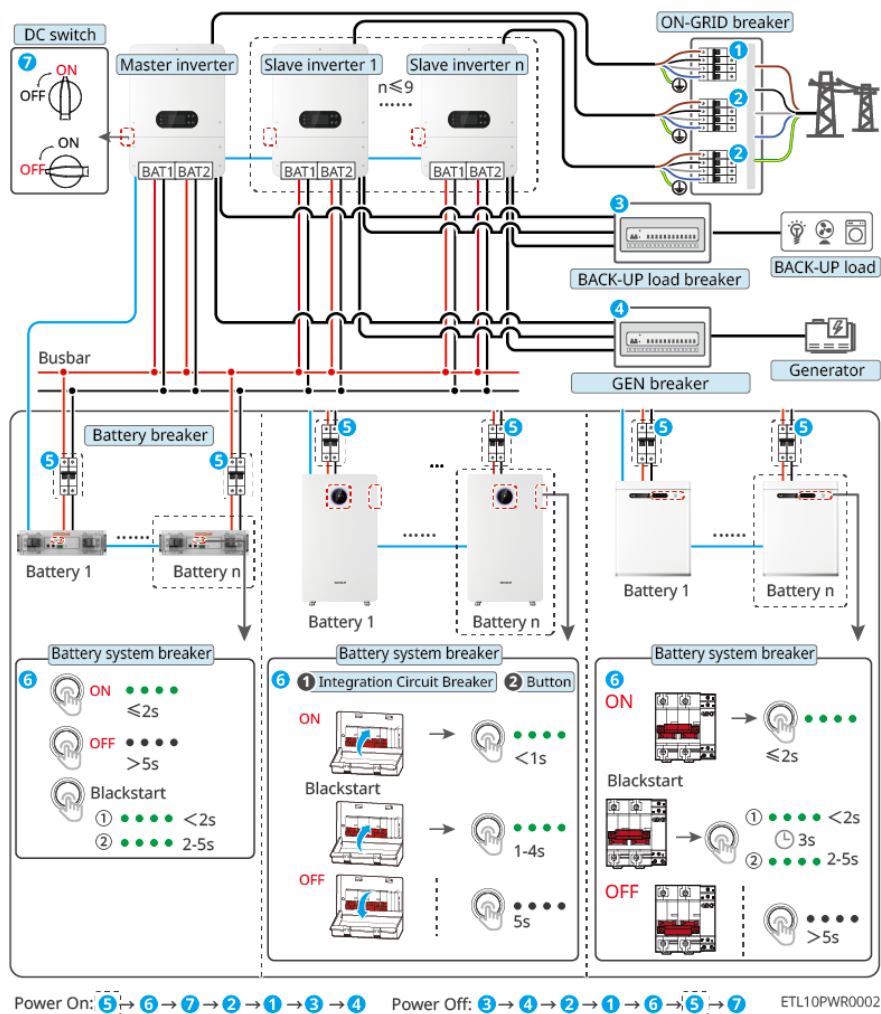


Lead-acid battery

The number of batteries depends on the voltage.

— CAT 5E and higher categories

ETL10NET0005



4 : Install or not based on local laws and regulations.



SolarGo APP



SEMS+ App

Download and open the app, then follow the on-screen instructions to connect to the inverter signal.

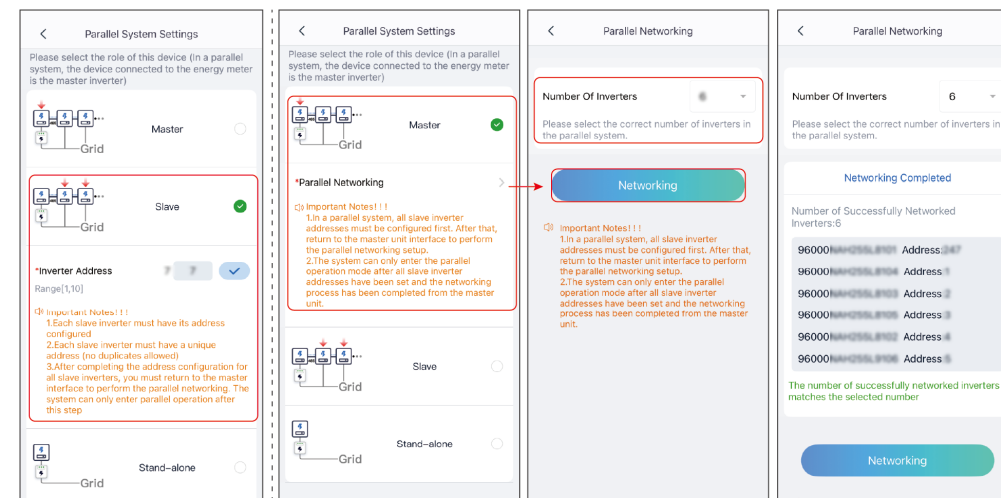
Quick Settings

Method I: Tap **Home > Settings > Quick Settings** to complete quick settings step by step. Installer password: goodwe2010

Method II: Using LCD screen to finish quick settings. Click on the screen or use buttons to operate. **⚙️ > Quick Setting**, follow the prompts to complete inverter settings. Advanced function page initial password:1111

Setting RS485 Parallel System

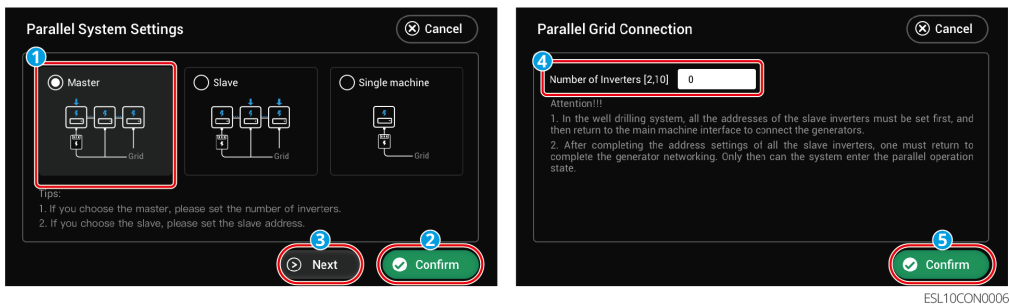
Setting RS485 Parallel System via SolarGo APP



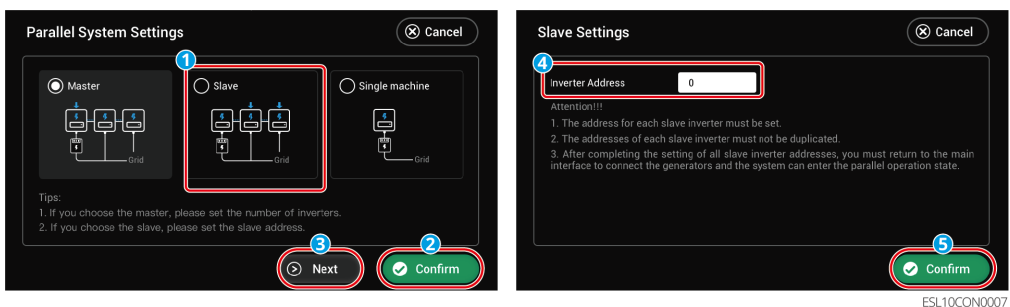
SLG00CON0188

Setting RS485 Parallel System via LCD screen

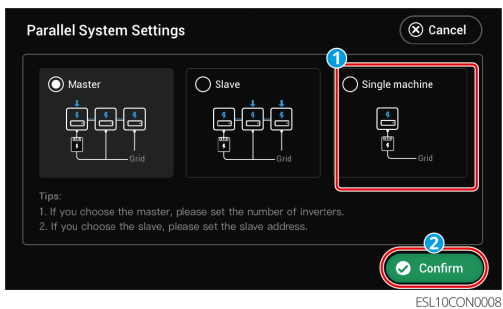
Setting Master Inverter Parameters



Setting Slave Inverter Parameters

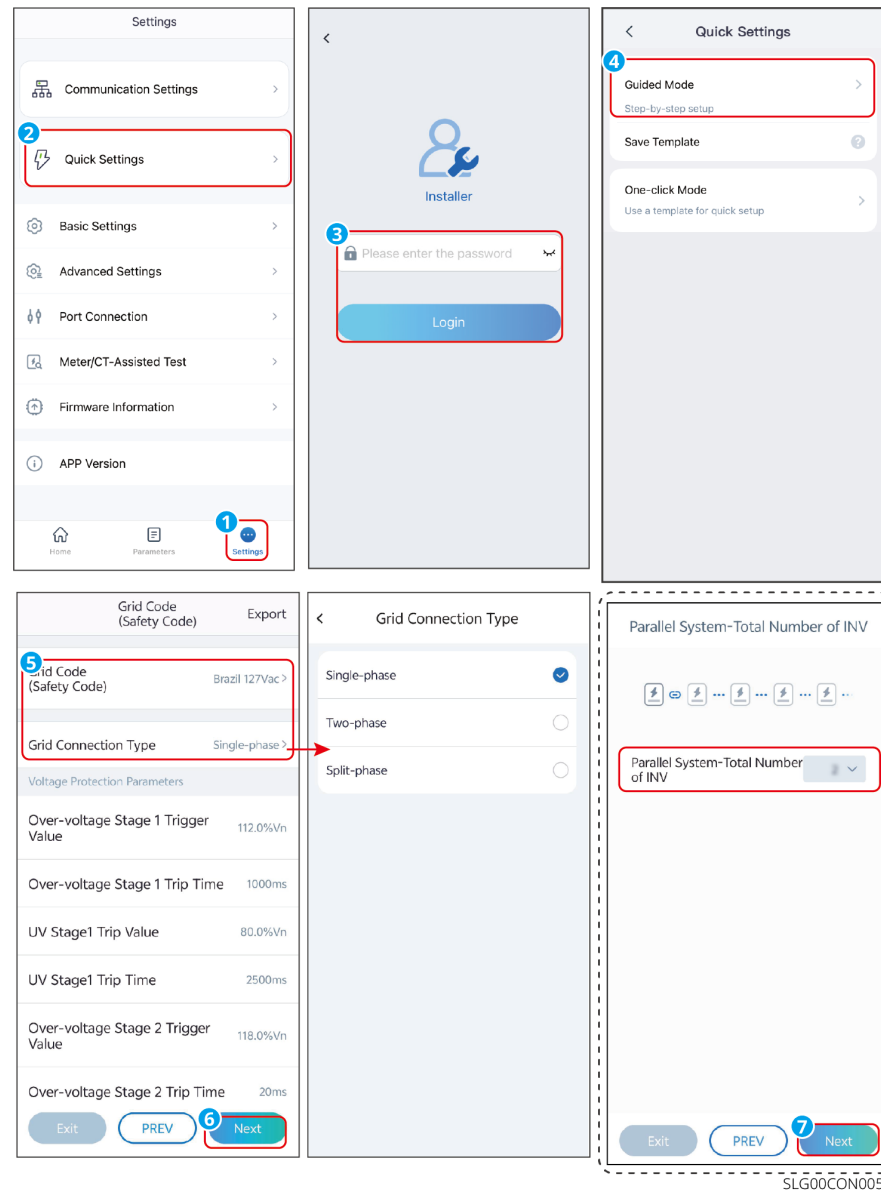


Settings Single Unit

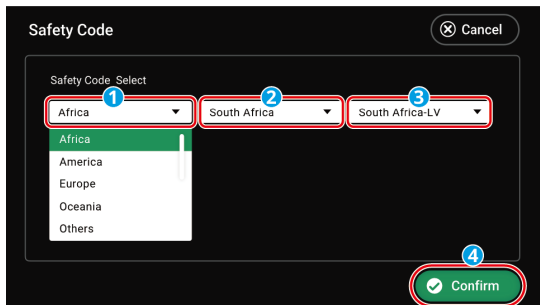


Setting Safety Code

Setting safety code and grid type via SolarGo APP



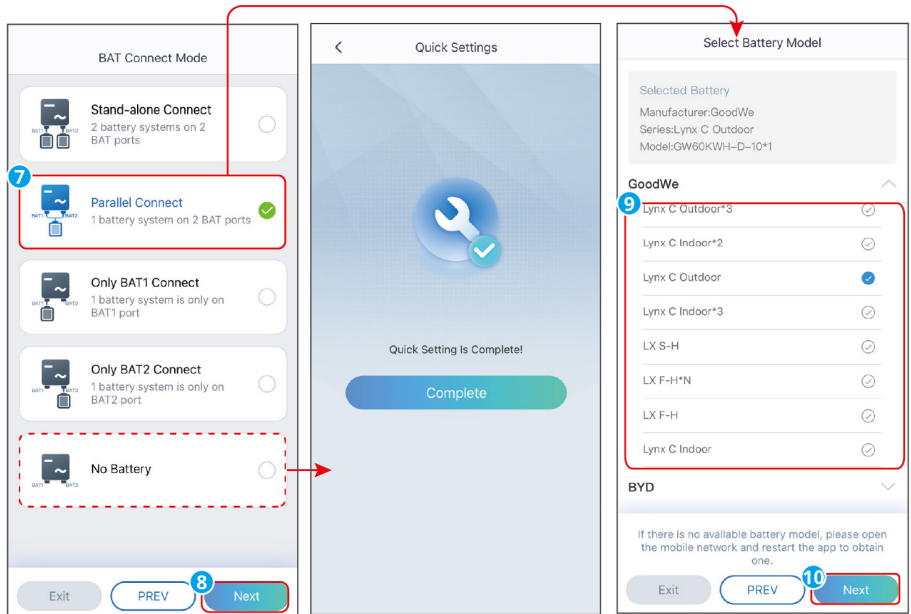
Safety code via LCD screen



ETL10CON0002

Setting the BAT Connect Mode

Setting the BAT Connect Mode via SolarGo APP



SLG00CON0192

When paralleling Inverter via RS485, please set the Battery access mode to either busbar mode or non-busbar mode based on actual conditions, and select the Battery model. Once the master unit is configured, the slave units will automatically synchronize the Battery settings. If the Battery connected to the slave unit does not match the master unit, please access the Quick Settings interface via the slave SN on the homepage and configure the Battery model separately.

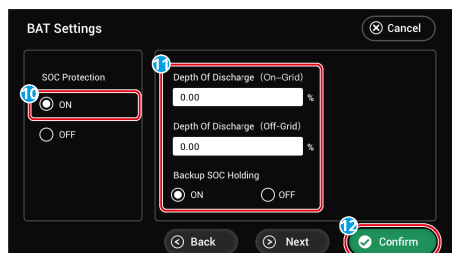
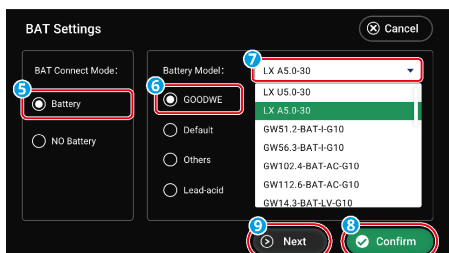
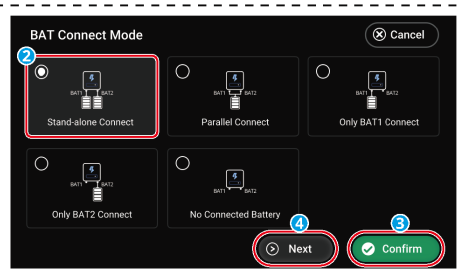
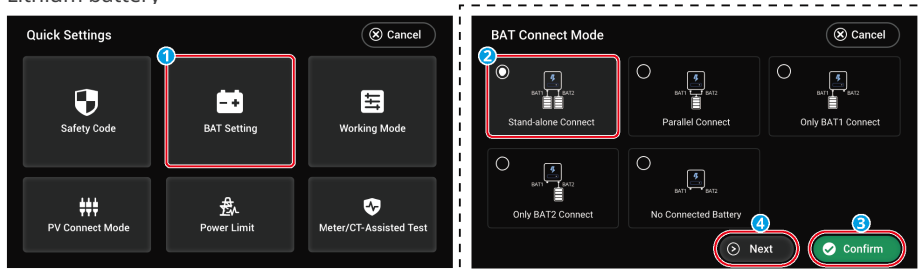


SLG00CON0195

05 Equipment Commissioning

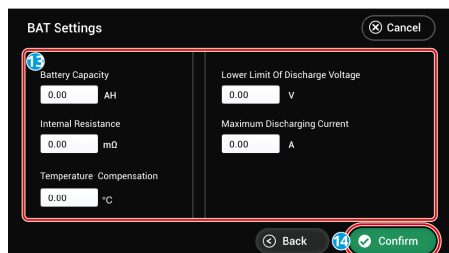
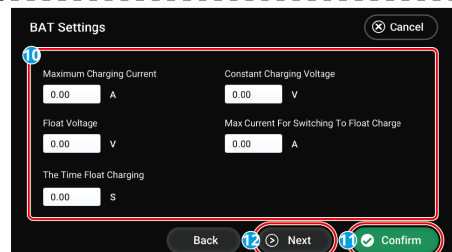
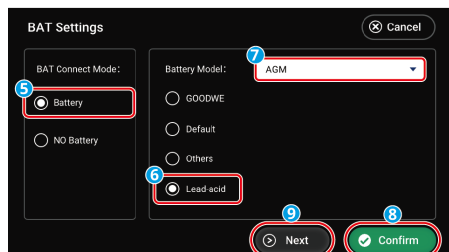
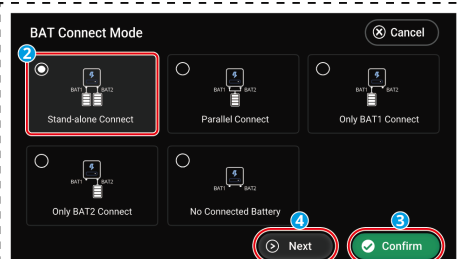
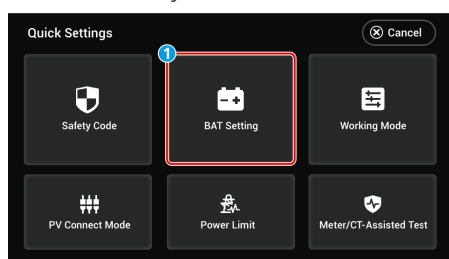
Setting BAT parameter via LCD screen

Lithium battery



ESU10CON0013

Lead-acid battery



ETL10CON0003

Setting the Working Mode

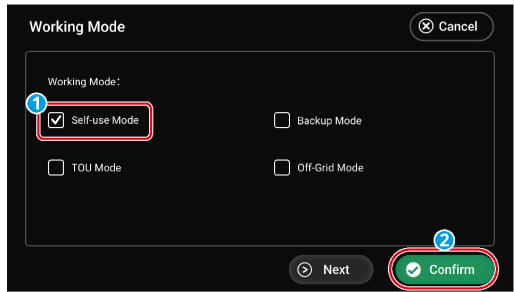
Setting working mode via SolarGo APP



ETL10CON0016

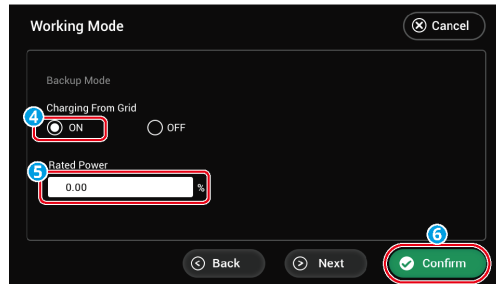
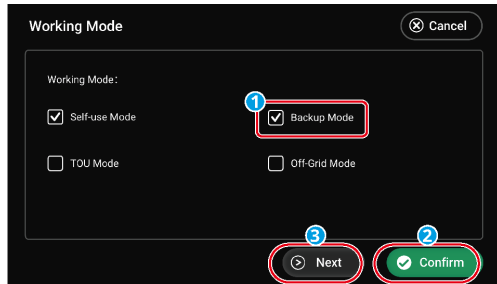
Setting working mode via LCD screen

Self-use Mode



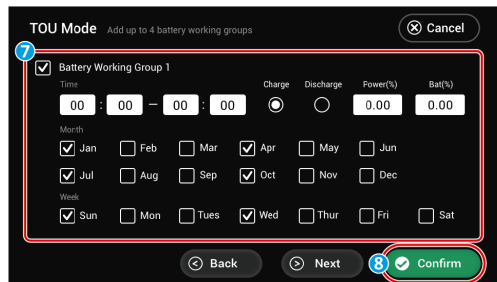
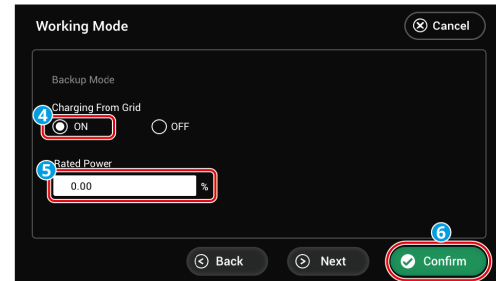
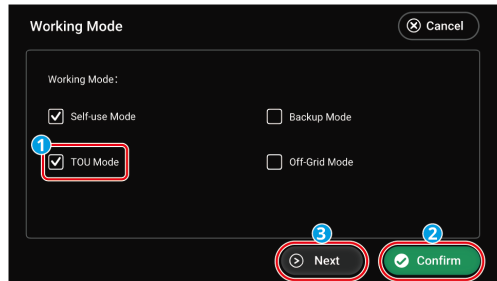
ETL10CON0014

Back-up Mode



ESU10CON0015

TOU Mode

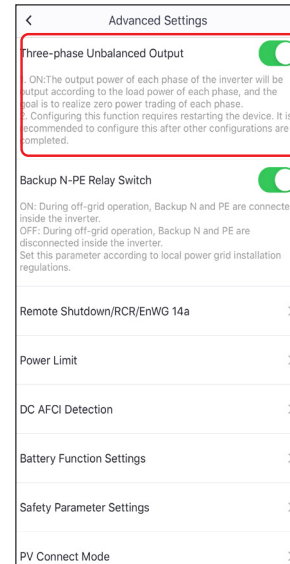


ETL10CON0008

Setting Advanced Parameters

Tap **Home** > **Settings** > **Advanced Settings** to set the following functions.

Three-phase Unbalanced Output Function (Optional)

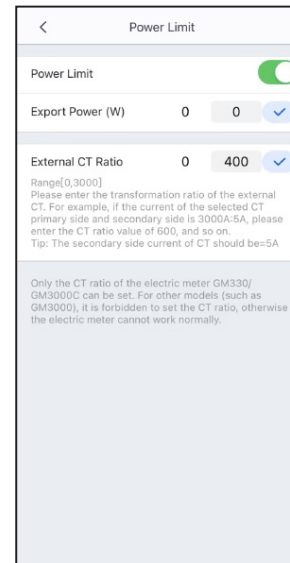


Enable **Three-phase Unbalanced Output** when the utility grid company adopts phase separate billing.

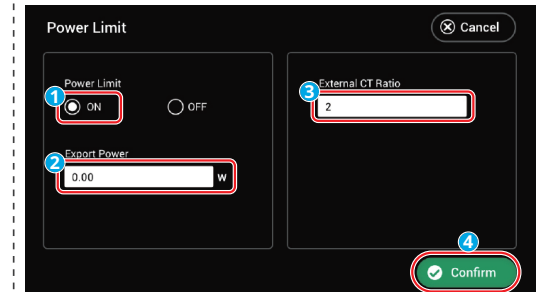
Setting the Power Limit Function

Setting Power Limit via SolarGo APP

Tap **Home** > **Settings** > **Advanced Settings** to set the following functions.



Setting power limit via LCD screen



ESU10CON0016

Configuring the Network

Tap the SolarGo APP, Tap **Home > Settings > Communication Settings > WLAN/LAN** to set network parameters.

WiFi/LAN Kit-20

Network Settings Save

WLAN ON

Network Name
GOODWE-yanfa-test

Encryption Type

WPA2/WPA

Password

DHCP ON

If you need to set a specific IP address, you can manually enter it after turning off DHCP.

IP address 192.168.209.206

Subnet Mask 255.255.255.0

Gateway address 192.168.209.254

DNS server 192.168.181.167

LAN ON

DHCP ON

If you need to set a specific IP address, you can manually enter it after turning off DHCP.

IP address 0.0.0.0

Subnet Mask 0.0.0.0

Gateway address 0.0.0.0

DNS server 0.0.0.0

[Restore factory communication settings](#)

Creating a Power Plant

Create power plants and add equipments via SEMS + app.

SEMS0011

Generation Today: 20.30 kWh

This Month: 1.35 kWh, This Year: 3.16 kWh, Lifetime: 3.16 kWh

Total Installed Capacity: 216.25 kWp

9 Plants

2 Running, 0 Waiting, 7 Offline, 0 Fault

11 All, 2 Running, 0 Waiting, 9 Offline

Current Power: DEMO 3.00 kWp, DEMO 3.00 kWp, DEMO 33.00 kWp, DEMO 3.96 kWp, DEMO 3.69 kWp, DEMO 33.00 kWp, DEMO 5.23 kWp

Services: Warranty, Report Center, GoodWe News, Announcements, Community

Tools: Create Station, Network Link, DNSP Registration

Help

Create Plant

Owner's email address
Enter owner's email address

Plant Name*
Enter plant name

Plant Address*
Select your plant address

Plant Time Zone*
Select your plant time zone

Detailed Plant Address
Enter your detailed address

Plant Category*
Select your plant category

Currency*
GBP

Plant Capacity*
Enter your plant capacity kWp

Modules
Enter the number of solar panels

Rate of revenue*
0.22 GBP/kWh

Plant Profile Photo
Add Photo

4 Save & Continue, Save & Exit

Device SN
Enter or scan your device SN

Device Name
Enter or scan your device name

Check Code
Enter the correct check code

7 Done


Enter Plant Name/Inverter SN/Email address


11 All, 2 Running, 0 Waiting, 9 Offline

Current Power: DEMO 3.00 kWp, DEMO 3.00 kWp, DEMO 33.00 kWp, DEMO 3.96 kWp, DEMO 3.69 kWp, DEMO 33.00 kWp, DEMO 5.23 kWp

1

GoodWe Technologies Co., Ltd.

 No. 90 Zijin Rd., New District,
Suzhou, 215011, China

 www.goodwe.com

 service@goodwe.com