

MV Station

9.15MVA

The GoodWe Medium-voltage Station is a compact step-up power center engineered to endure diverse environmental conditions. It boasts high power density, delivering energy-efficient and secure power transformation for large-scale solar plants. Comprising MV switchgear, transformer, and LV switchgear, this solution is pre-assembled and cost-effective, housed within a prefabricated 20ft container for convenient transportation and swift installation. Its Plug-and-Play design ensures seamless grid connection, while its modular architecture simplifies maintenance procedures. All enclosed electrical components undergo rigorous type-testing, adhering to stringent safety standards for operator security. Capable of full-power operation at temperatures up to 40°C, it guarantees reliable performance in demanding settings.



Cost-saving Solution

- 20ft HC container for easy transportation
- A complete pre-assembled solution to minimize deployment



High Reliability & Safety

- Type-tested components of reliable quality
- Suitable for harsh environments



Easy Operation & Maintenance

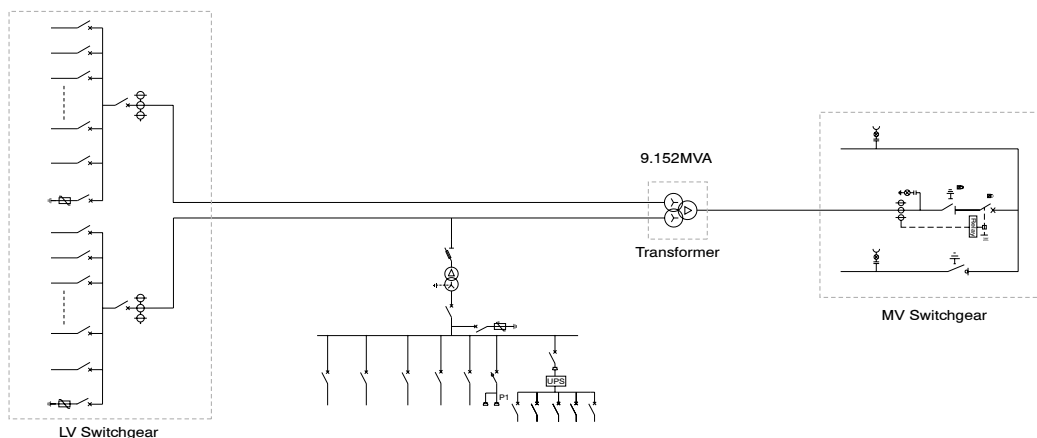
- Plug & play installation
- Integrated modular design simplifying maintenance



Trustworthy Adaptability

- Compatible with GoodWe UT Series inverter
- Outstanding adaption to extreme environments

CIRCUIT DIAGRAM



Model	GW9100K-MVS
Transformer	
Transformer Type	Oil immersed
Rated Power (kVA)	9152kVA@40°C
Winding Connection	Dy11 - y11
LV / MV Voltage (kV)	0.8 / 20 ~ 35
Maximum Input Current at Nominal Voltage (A)	2 × 3302
Frequency (Hz)	50 / 60
Tapping Range	±2 × 2.5%
Peak Efficiency Index	≥99%
Cooling Type	ONAN (Oil Natural Air Natural)
Impedance	9.5% (±10%)
Oil Type	Mineral oil (PCB free)
Winding Material	Al / Al
Insulation Class	A
MV Switchgear	
Insulation Type	SF6
Rate Voltage (kV)	24 ~ 40.5
Rate Current (A)	630
Internal Arcing Fault	IAC AFL 20kA / 1s
Qty. of Feeder	3 feeders (DCV, Optional: CCV)
LV Room	
ACB Specification	4000A / 800Vac / 3P, 2pcs
MCCB Specification	320A / 800Vac / 3P, 26pcs
Protection	
AC Input Protection	Circuit breaker
Transformer Protection	Oil-temperature, oil-level, oil-pressure
LV Overvoltage Protection	AC Type I + II
General Data	
Dimensions (W × H × D mm)	6058 × 2896 × 2438
Approximate Weight (t)	<25
Operating Temperature Range (°C)	-25 ~ +55 (>40°C derating)
Auxiliary Power Supply	5kVA / 400V (Optional: max. 50kVA)
Ingress Protection Rating	IP54
Relative Humidity	0 ~ 95%
Max. Operating Altitude (m)	1000 (Optional: 2000)
Anti-corrosion Class	C4H (Optional: C5M)
Communication	RS485, Ethernet, Optical Fiber (Optional)
Compliance	IEC 60076, IEC 62271-200, IEC 62271-202, IEC 61439-1/2, EN50708-1, CE

*: Please visit GoodWe website for the latest certificates.